

## Configuration File Compare

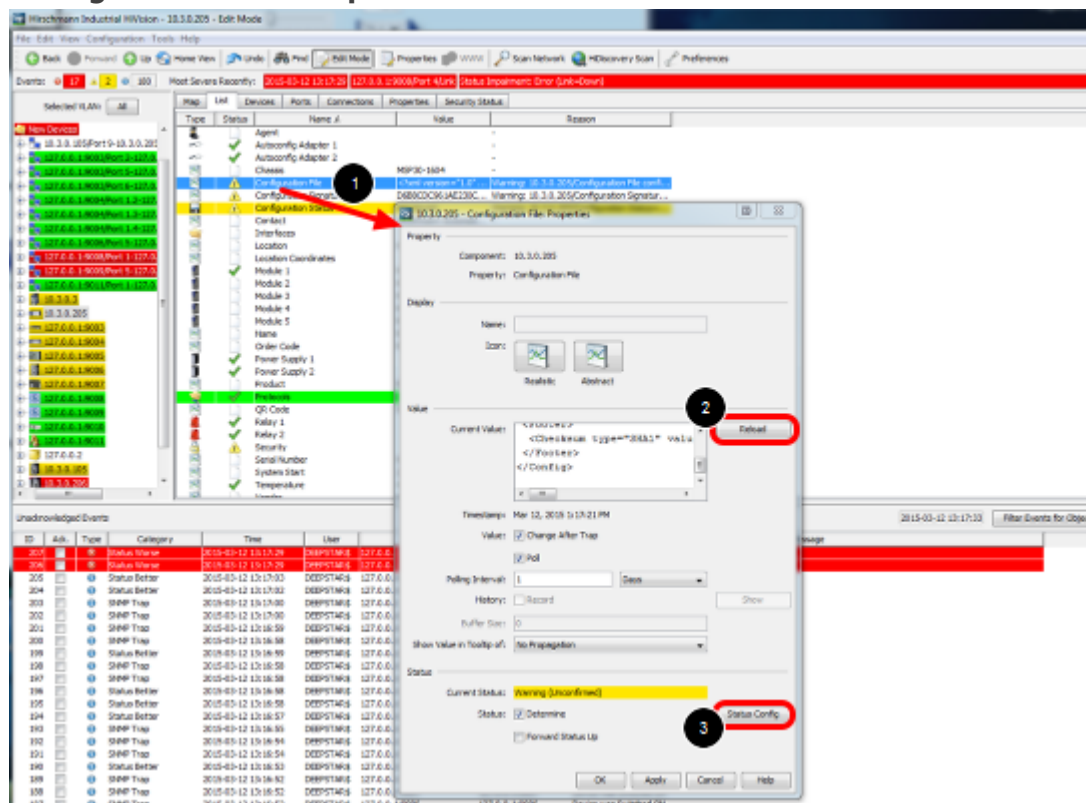
- 2018-02-21 - Industrial HiVision

As of v6.0 IHV is able to monitor the configuration file of a device (Platform4, Platform5, EAGLE, BAT and GarrettCom).

Therefor the clear text configuration (script or xml) is stored in a property. The standard polling/status configuration can be used for comparing the current configuration to the reference config.

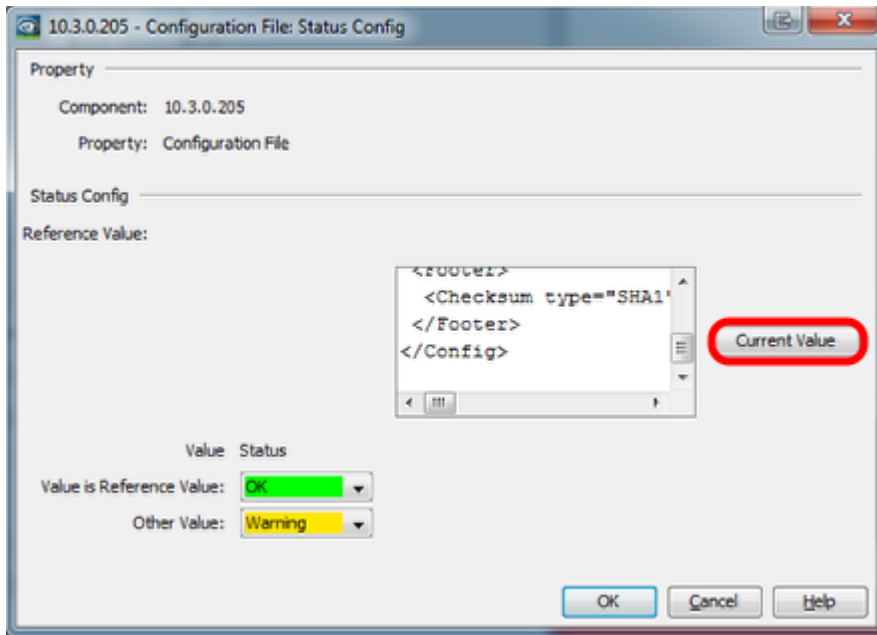
This lesson describes how to set a reference configuration and in case of configuration changes how you can display the differences.

### Configuration File Properties



1. double click on the property Configuration File
2. press reload to download the current configuration from the device
3. open the status configuration

### Configuration File - Status Config



In the status configuration dialog you can set the current value as reference value.

## Change the configuration

Hirschmann Industrial HiView - 10.3.0.205 - Edit Mode

File Edit View Configuration Tools Help

Back Forward Up Home View Links Print Edit Mode Properties WWW Scan Network HiDiscovery Scan Preferences

Events: 0 2 1 187 Most Severe Recently: 2015-03-12 13:18:08 127.0.0.1:9000/Port 40/In Load Status: Impedance Error (In Load) - 20.0, Current Value: 190.0

Selected VLAN:	All
10.3.0.135/Port 9-10 10.3.0.207	Agent
127.0.0.1:9000/Port 3-1227	Autocfg Adapter 1
127.0.0.1:9000/Port 3-1227	Autocfg Adapter 2
127.0.0.1:9000/Port 3-1227	Chassis
127.0.0.1:9000/Port 3-1227	Configuration File
127.0.0.1:9000/Port 3-1227	Configuration Signature
127.0.0.1:9000/Port 3-1227	Configuration Status
127.0.0.1:9000/Port 3-1227	Contact
127.0.0.1:9000/Port 3-1227	Interfaces
127.0.0.1:9000/Port 3-1227	Location
127.0.0.1:9000/Port 3-1227	Location Coordinates
10.3.0.3	Module 1
127.0.0.1:9000/Port 3-1227	Module 2
127.0.0.1:9000/Port 3-1227	Module 3
127.0.0.1:9000/Port 3-1227	Module 4
127.0.0.1:9000/Port 3-1227	Module 5
127.0.0.1:9000/Port 3-1227	Name
127.0.0.1:9000/Port 3-1227	Order Code
127.0.0.1:9000/Port 3-1227	Power Supply 1
127.0.0.1:9000/Port 3-1227	Power Supply 2
127.0.0.1:9000/Port 3-1227	Product
127.0.0.1:9000/Port 3-1227	Release
127.0.0.1:9000/Port 3-1227	QR Code
127.0.0.1:9000/Port 3-1227	Role 1
127.0.0.1:9000/Port 3-1227	Role 2
127.0.0.1:9000/Port 3-1227	Security
127.0.0.1:9000/Port 3-1227	Serial Number
127.0.0.1:9000/Port 3-1227	System Start
127.0.0.1:9000/Port 3-1227	Temperature
127.0.0.1:9000/Port 3-1227	Version

Unacknowledged Events

ID	Auth.	Type	Category	Time	User	Source
223		Status Better		2015-03-12 13:27:01	DEPSTARS	10.3.0.205
222		User Intervention		2015-03-12 13:27:01	Chris	10.3.0.205
221		Status Better		2015-03-12 13:28:26	DEPSTARS	127.0.0.1:9000
220		Status Worse		2015-03-12 13:28:29	DEPSTARS	127.0.0.1:9000
219		Application Info		2015-03-12 13:27:50	ib	Industrial HiView Service
218		Application Info		2015-03-12 13:27:49	ib	Industrial HiView Service
217		Application Info		2015-03-12 13:27:47	ib	Industrial HiView Service
216		Status Worse		2015-03-12 13:27:43	DEPSTARS	127.0.0.1:9000
215		Status Better		2015-03-12 13:27:43	DEPSTARS	127.0.0.1:9009
214		Status Better		2015-03-12 13:27:43	DEPSTARS	127.0.0.1:9009
213		Status Worse		2015-03-12 13:27:40	DEPSTARS	127.0.0.1:9009
212		Status Worse		2015-03-12 13:27:40	DEPSTARS	127.0.0.1:9009
211		Status Better		2015-03-12 13:27:40	DEPSTARS	127.0.0.1:9009
210		Status Worse		2015-03-12 13:27:40	DEPSTARS	127.0.0.1:9009
209		Status Better		2015-03-12 13:27:40	DEPSTARS	127.0.0.1:9009
208		Status Worse		2015-03-12 13:27:35	DEPSTARS	127.0.0.1:9009
207		Status Worse		2015-03-12 13:27:29	DEPSTARS	127.0.0.1:9009
206		Status Worse		2015-03-12 13:27:29	DEPSTARS	127.0.0.1:9009
205		Status Better		2015-03-12 13:27:03	DEPSTARS	127.0.0.1:9003
204		Status Better		2015-03-12 13:27:02	DEPSTARS	127.0.0.1:9009
203		SNMP Trap		2015-03-12 13:27:00	DEPSTARS	127.0.0.2
202		SNMP Trap		2015-03-12 13:27:00	DEPSTARS	127.0.0.1:9011

10.3.0.205 - Location Properties

Property  
Component: 10.3.0.205  
Property: Location

Deploy  
Name:   
Icon:  Realistic  Abstract

Value  
Current Value:

Timestamp: Mar 12, 2015 12:27:43 PM  
Value:  Change After Trap  
 Fill

Polling Interval:  Minutes  
History:  Record

Buffer Size:   
Show Value in Tooltip of:

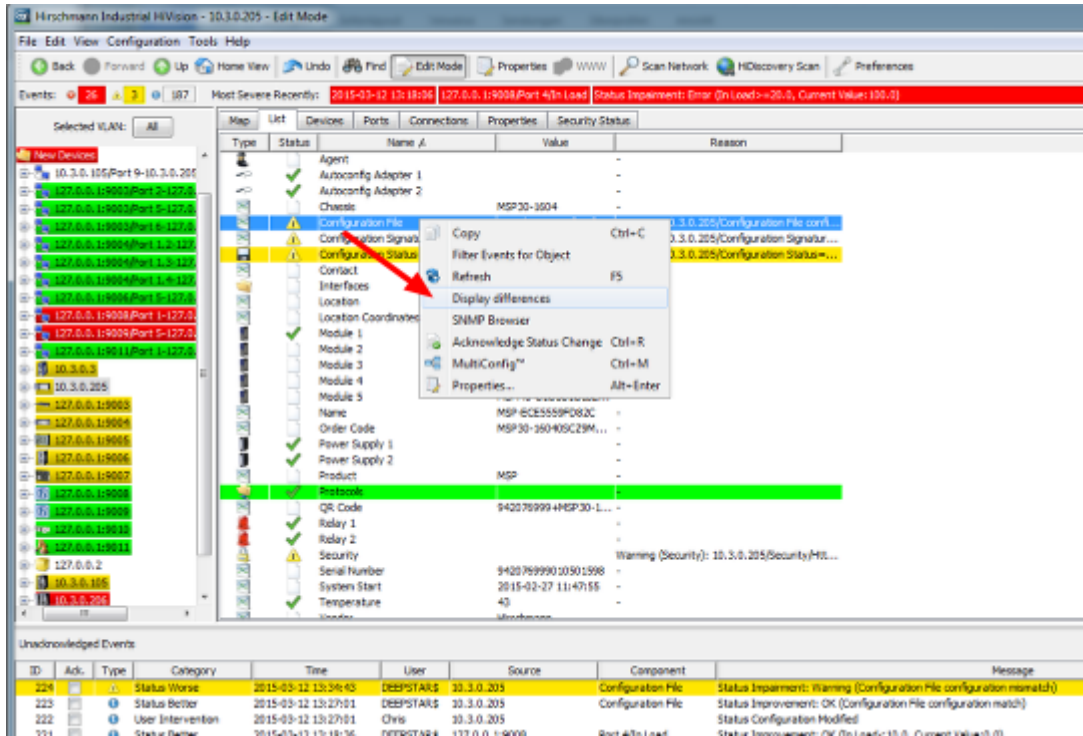
Status  
Current Status:   
Status:  Determine   
 Forward Status Up

4

Change the device configuration e.g. the device location:

1. double click the property location
2. change the current value
3. press write

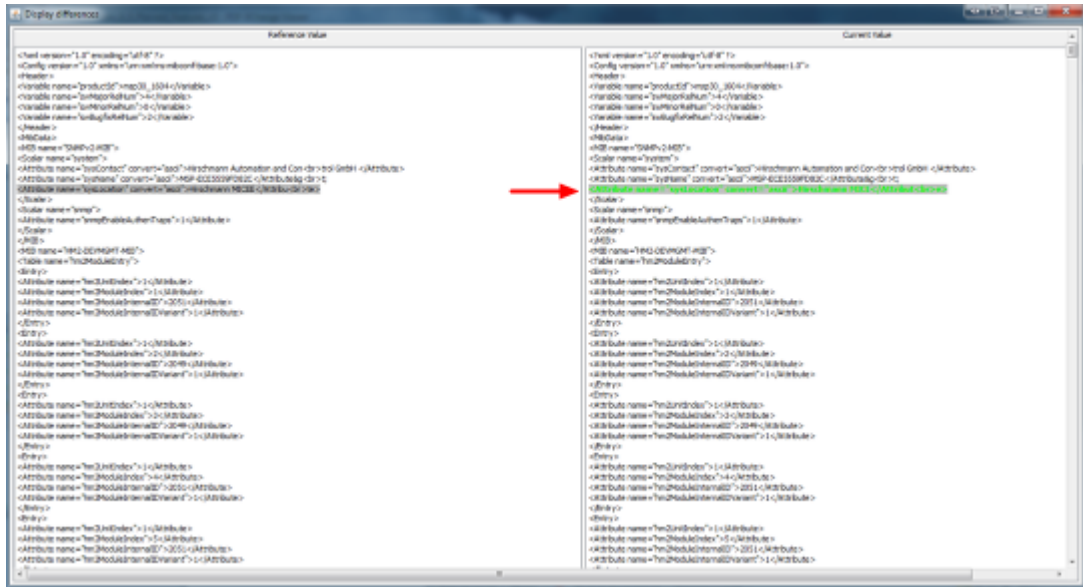
4. close the dialog with ok



Reload the Configuration File property if the change is not already detected.

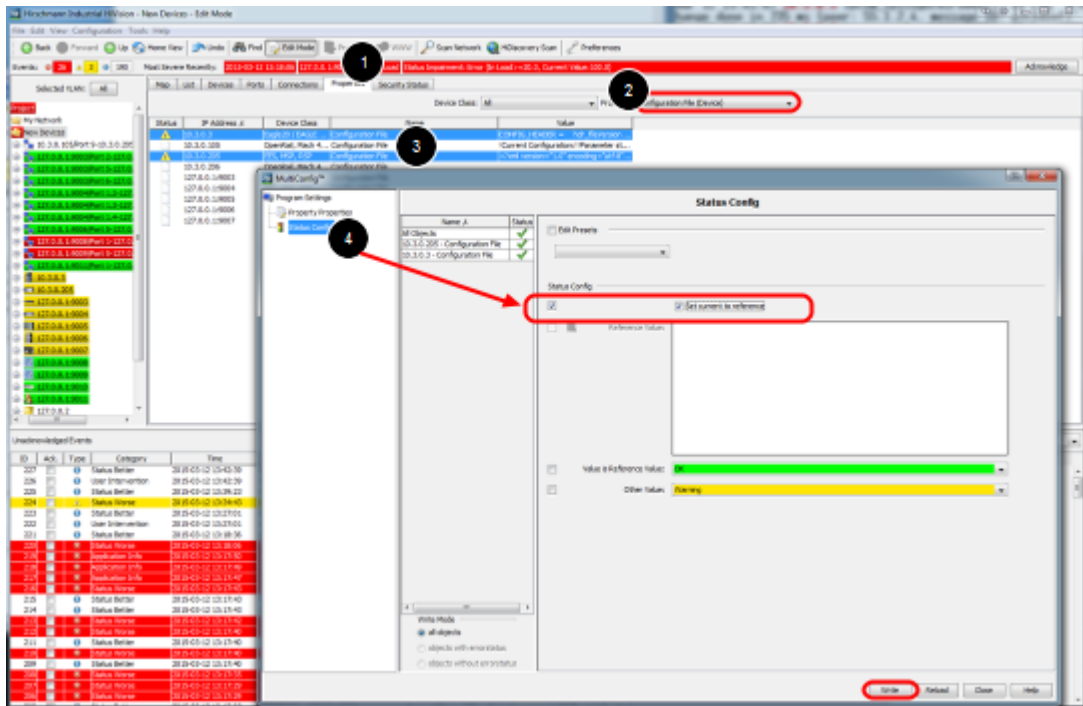
Open the context menu (right click on Configuration File) and select Display Differences

## Display Differences



A new window will open which highlights the differences between the current and the reference config.

## Set reference value per MultiConfig



1. To set the current value as reference value on multiple devices navigate to the Properties tab.
2. Select the property 'Configuration File (Device)'
3. Highlight devices and select Multiconfig from the context menu (right click)
4. Go to Status Config and tick 'Set current to reference'