

Configuration Signature Check

- 2018-02-21 - Industrial HiVision

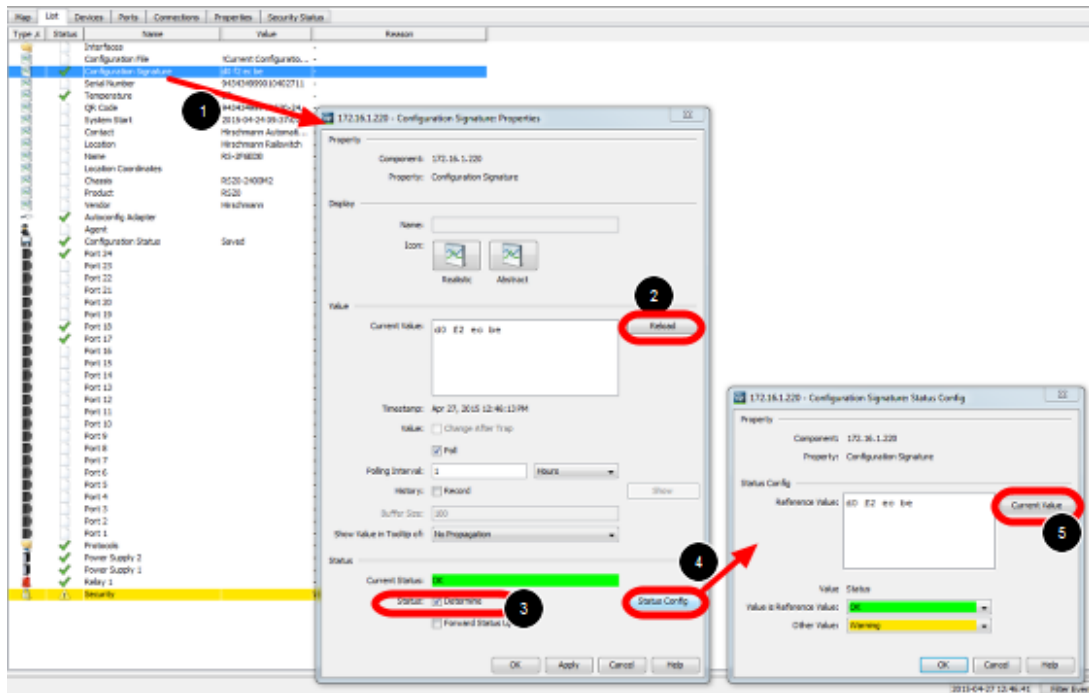
As of v6.0 IHV is able to monitor the configuration signature of a device (Platform4, Platform5, EAGLE)

Therefor the signature is stored in a property.

The standard polling/status configuration can be used for comparing the configuration signature to the reference signature.

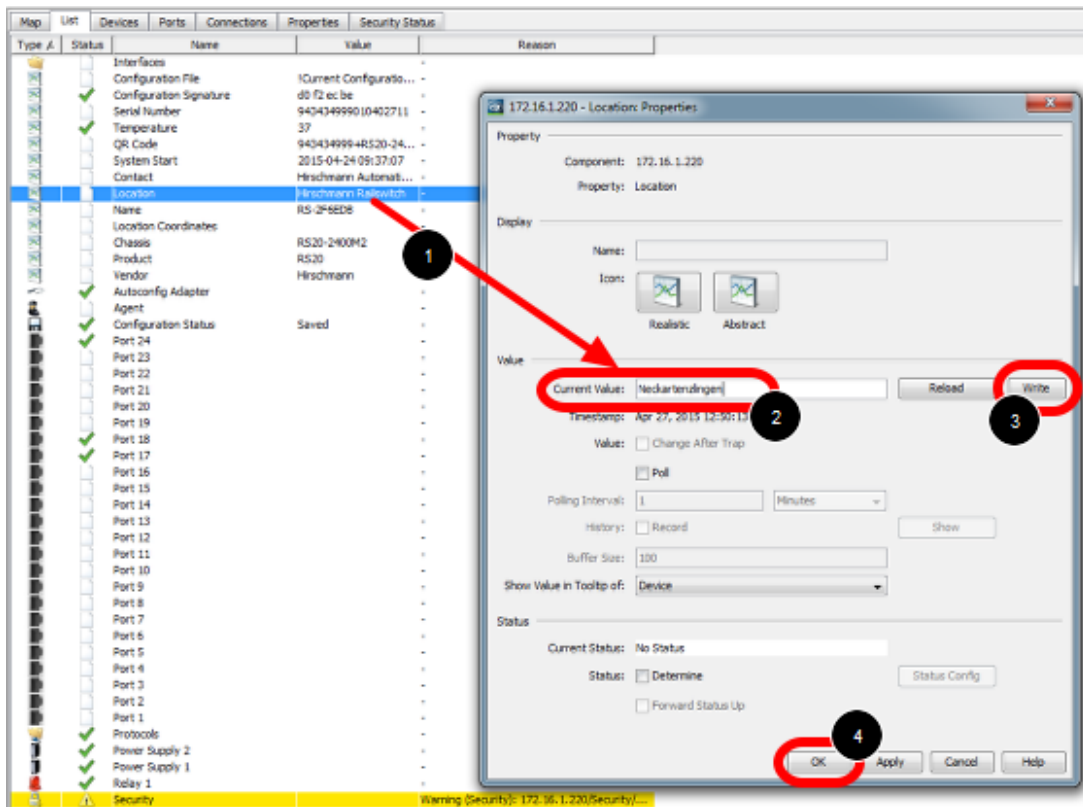
This lesson describes how to set a reference value of the configuration signature and how differences are displayed.

Configuration Signature Properties



1. double click on the property **Configuration Signature**
2. press reload to download the current configuration signature from the device
3. tick check box **Determine Status**
4. open the status configuration
5. set the current value as reference value

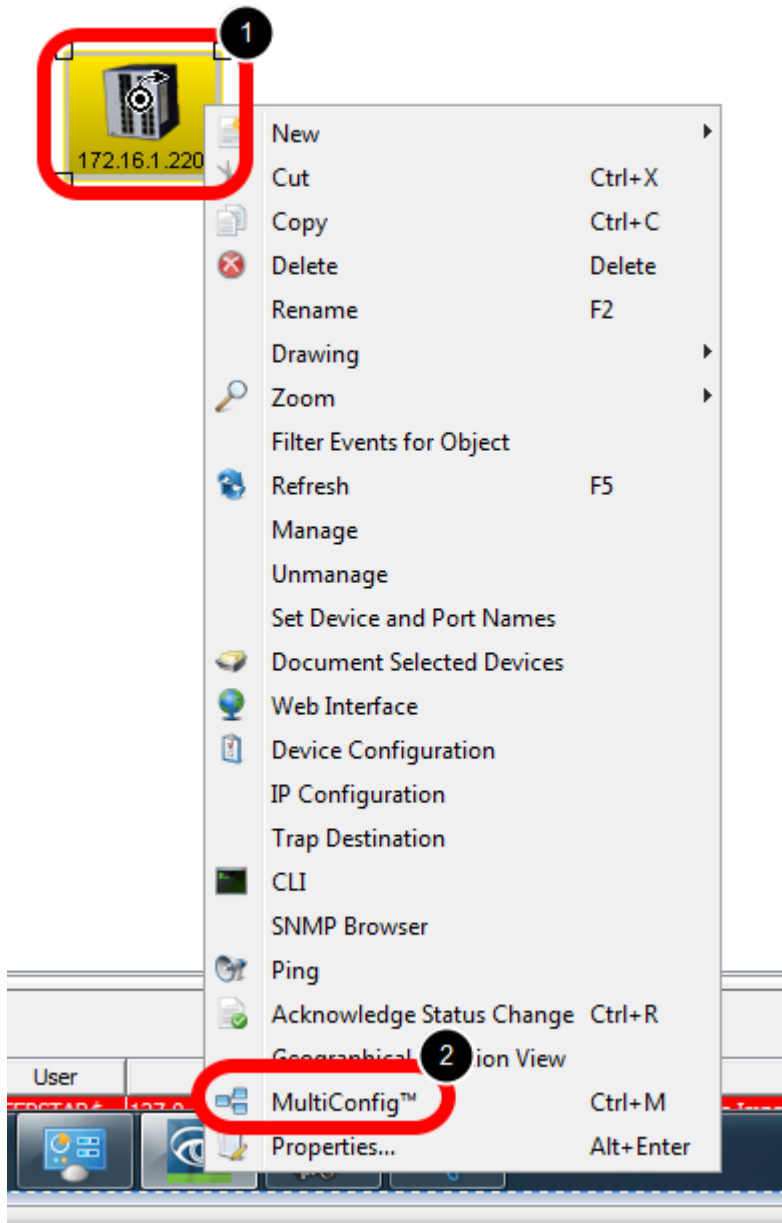
Change the configuration



Change the device configuration e.g. the device location:

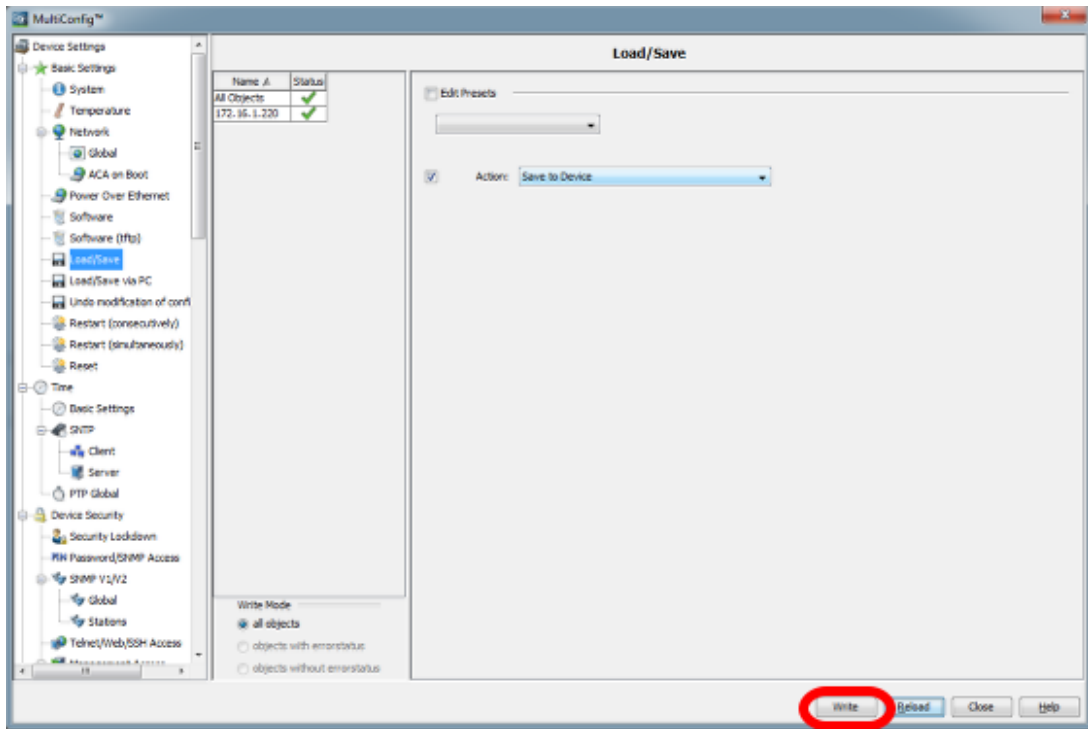
1. double click the property location
2. change the current value
3. press write
4. close the dialog with ok

MultiConfig



1. right click the device on which you just changed the location property
2. select MultiConfig from the context menu

Save the configuration



Save the configuration by pressing Write in the Load/Save dialog

Configuration Signature - Status Impairment

The screenshot displays the Winbox Industrial Manager interface. The main window shows a tree view on the left with 'Configuration Signature' highlighted. Two dialog boxes are open: 'Configuration Signature Properties' and 'Configuration Signature Status Config'. The 'Properties' dialog shows 'Current Value' as '03 00 00 00'. The 'Status Config' dialog shows 'Reference Value' as '03 00 00 00'. A red arrow points from the 'Current Value' field to the 'Reference Value' field. At the bottom, the 'Unacknowledged Events' table is visible.

ID	ACK	Type	Category	Time	User	Source	Component	Message
100		Warning	Status Error	2015-04-27 12:09:38	admin	172.16.1.238	Configuration Signature	Status Incomplete: Warning: Configuration Signature not OK
101		Warning	Status Error	2015-04-27 12:09:38	admin	172.16.1.238	Configuration Signature	Status Incomplete: Warning: Configuration Signature not OK
102		Warning	Status Error	2015-04-27 12:09:38	admin	172.16.1.238	Configuration Signature	Status Incomplete: Warning: Configuration Signature not OK
103		Warning	Status Error	2015-04-27 12:09:38	admin	172.16.1.238	Configuration Signature	Status Incomplete: Warning: Configuration Signature not OK