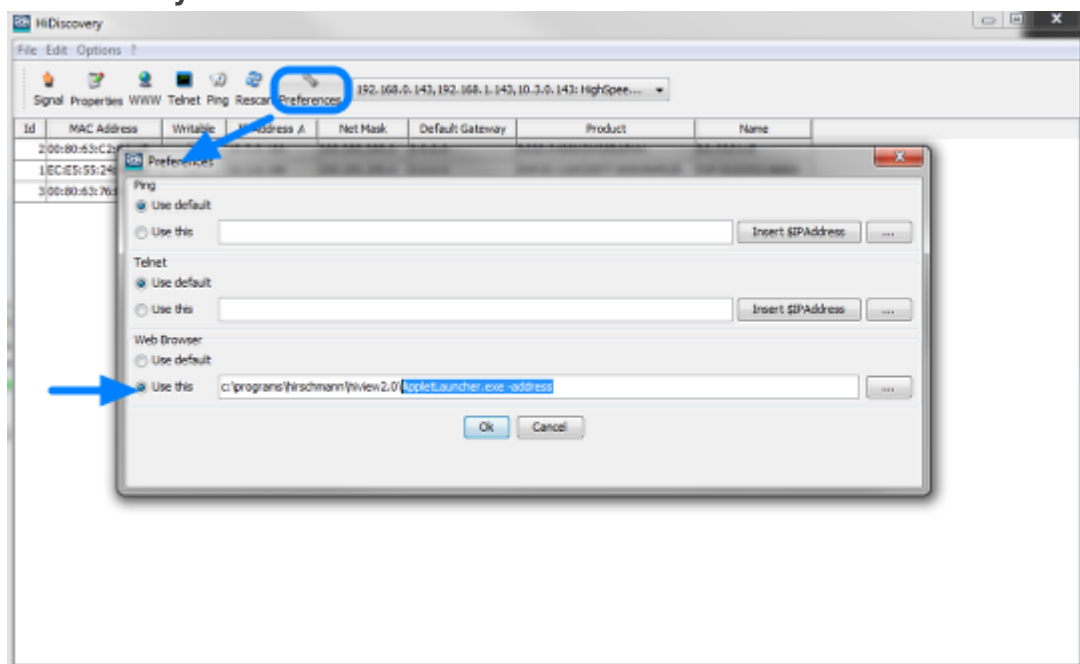


## How can I start HiView as external application?

- 2018-02-21 - Industrial HiVision

Starting HiView using the AppletLauncher.exe with the option -address allows to start HiView as external application from HiDiscovery and Industrial HiVision.

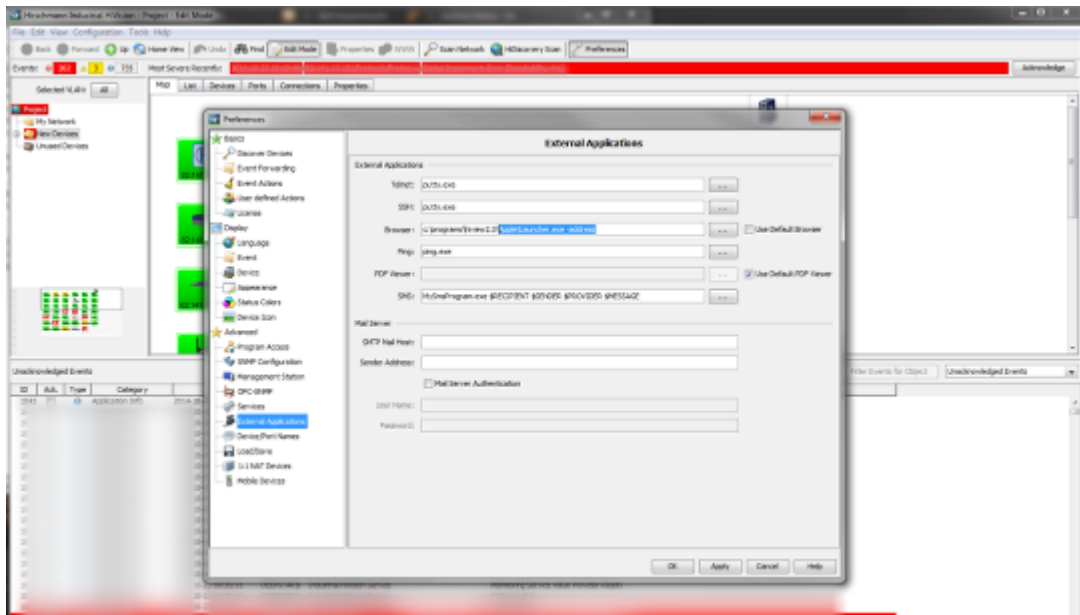
### HiDiscovery Preferences



To use HiView instead of a web browser from HiDiscovery you need to change the web browser path to **<install-dir HiView>\AppletLauncher.exe -address**

If you then highlight one device and click on WWW, HiView will start and open the selected device's webinterface

### Industrial HiVision Preferences



To use HiView instead of a web browser from Industrial HiVision you need to change the browser path to **<install-dir HiView>\AppletLauncher.exe -address**

If you then select web interface from a device's context menu, HiView will start and open the selected device's webinterface.