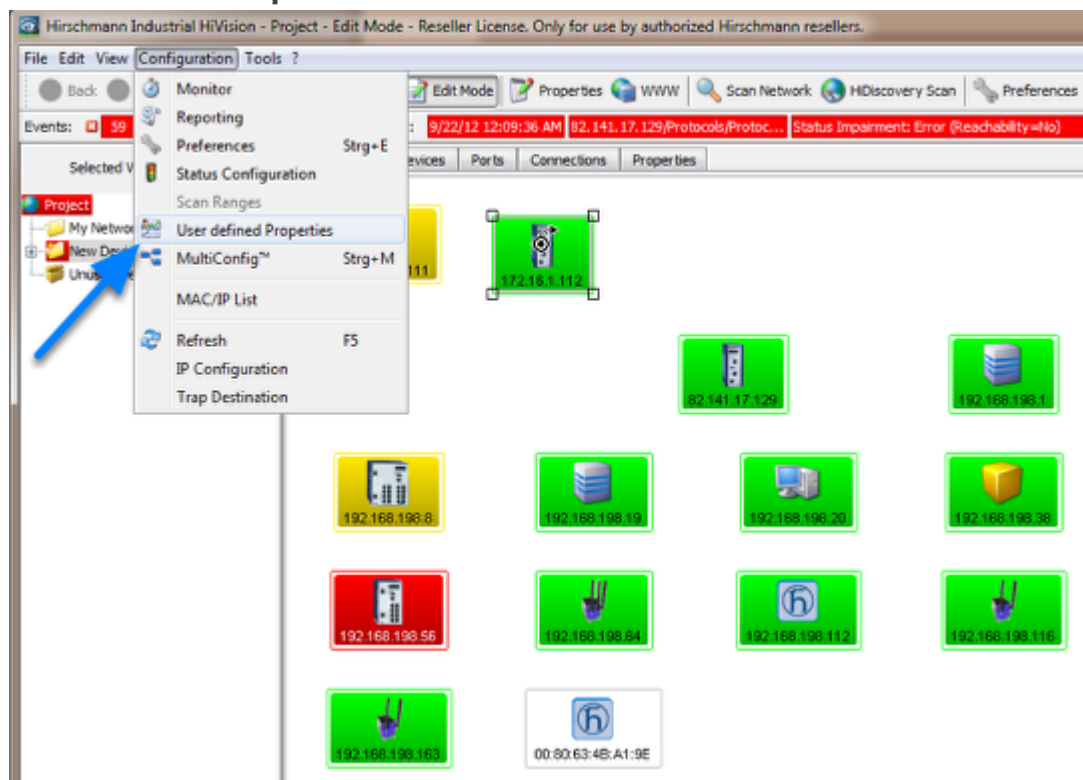


Howto display user defined properties in the map

- 2024-07-24 - Industrial HiVision

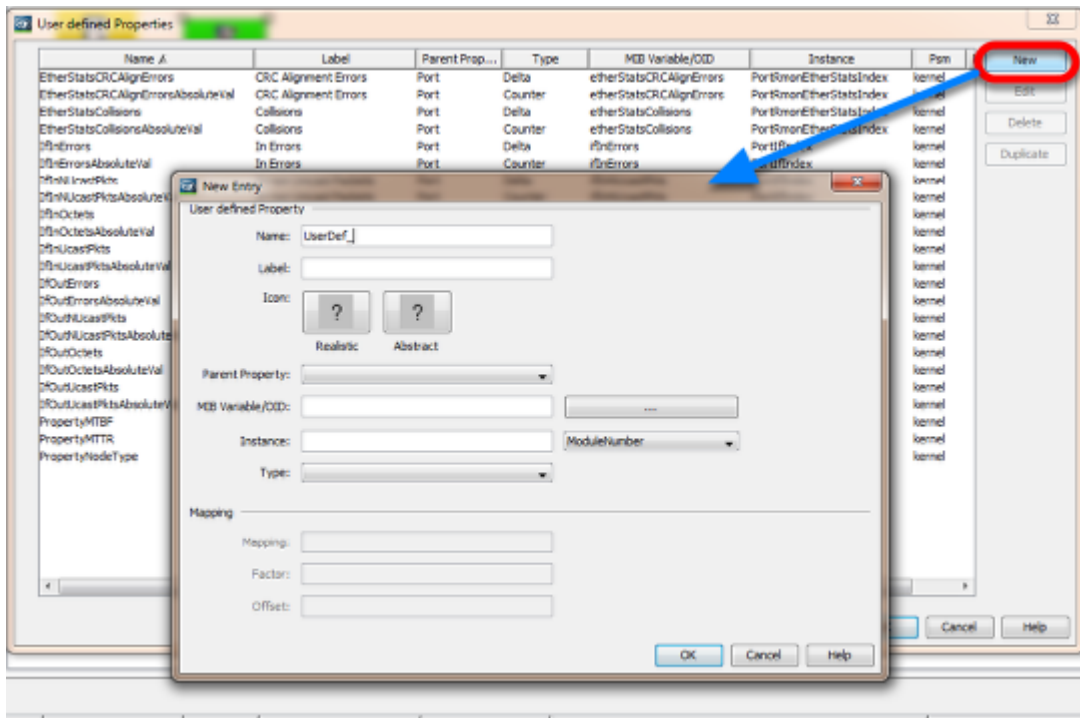
This lesson describes howto display user defined properties in the IHV map.
As an example a customized map for temperature values should be created.

User Defined Properties



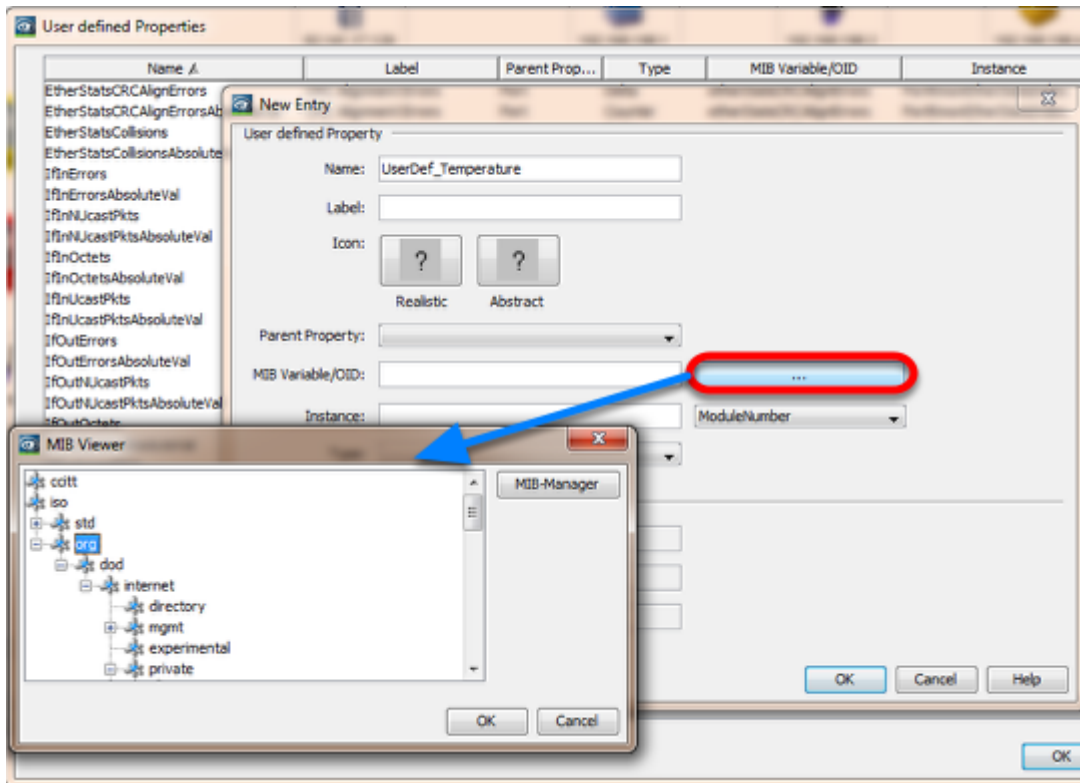
Select **Configuration -- User defined Properties**

New Entry



Click **New** to create a new property

MIB Viewer



Click the "... " button to browse through the MIB tree

or

Copy and paste the OID from the MIB Variable Finder document.

Note: Browsing the MIB and select a SNMP variable automatically fills the type field and if defined the mapping (e.g. 1=on, 2=off)

Temperature Upper Limit Property

User defined Property

Name:

Label:

Icon:
Realistic Abstract

Parent Property:

MIB Variable/OID:

Instance:

Type:

Mapping

Mapping:

Factor:

Offset:

Create a new property for the upper temperature limit.

OID: **1.3.6.1.4.1.248.14.2.5.2**

Instance: 0

Type: Integer

Temperature Lower Limit Property

User defined Property

Name:

Label:

Icon:
Realistic Abstract

Parent Property:

MIB Variable/OID:

Instance:

Type:

Mapping

Mapping:

Factor:

Offset:

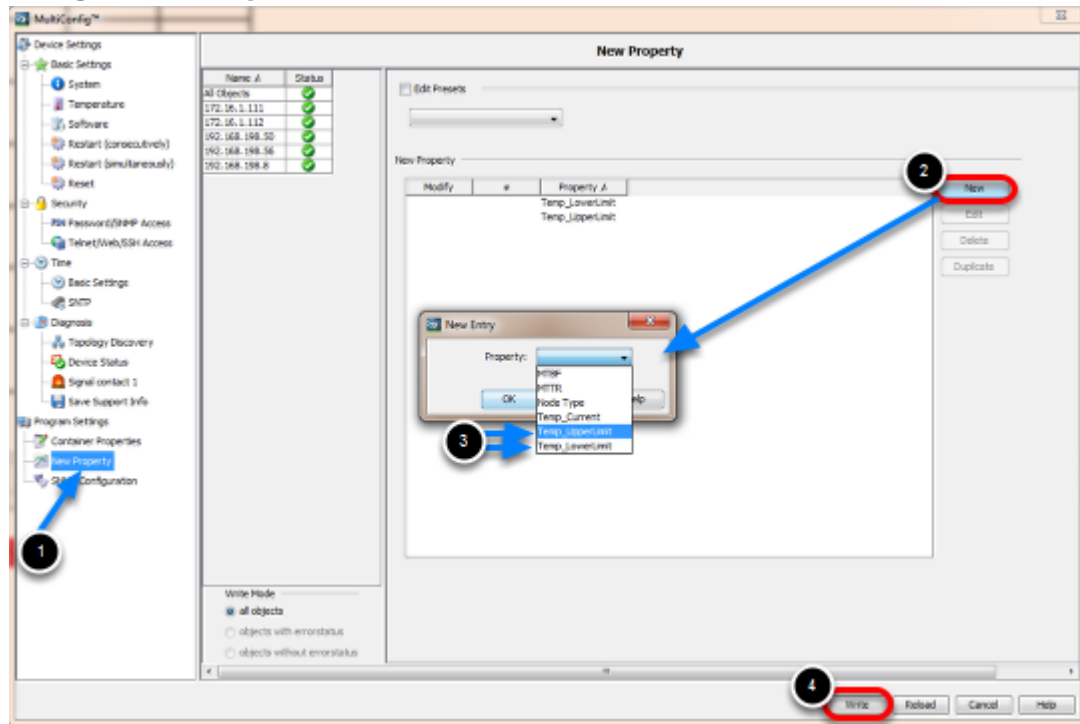
Create a new property for the lower temperature limit.

OID: **1.3.6.1.4.1.248.14.2.5.3**

Instance: 0

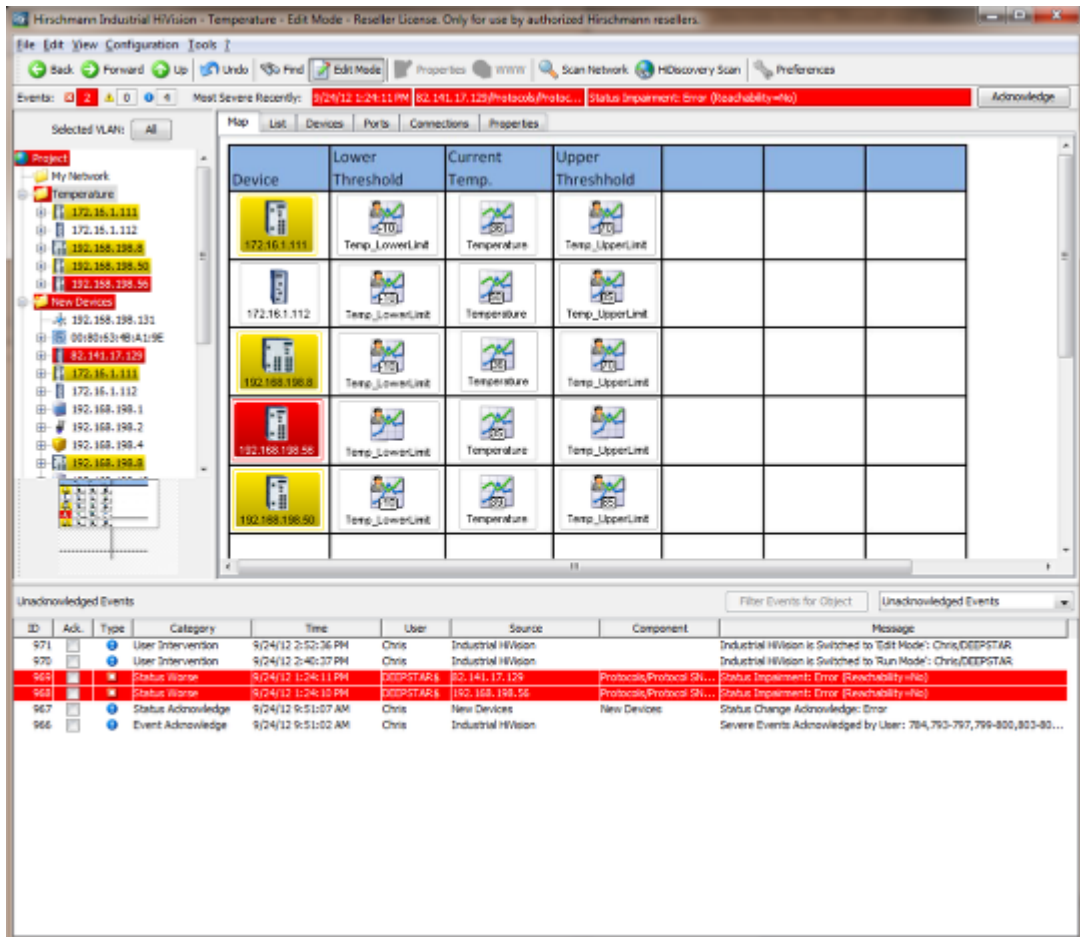
Type: Integer

Assign new Properties



1. Navigate to **New Property** in the MultiConfig
2. Click **New**
3. Select the previous configured properties and click OK
4. **Write** the changes to the selection of devices

Overview Map

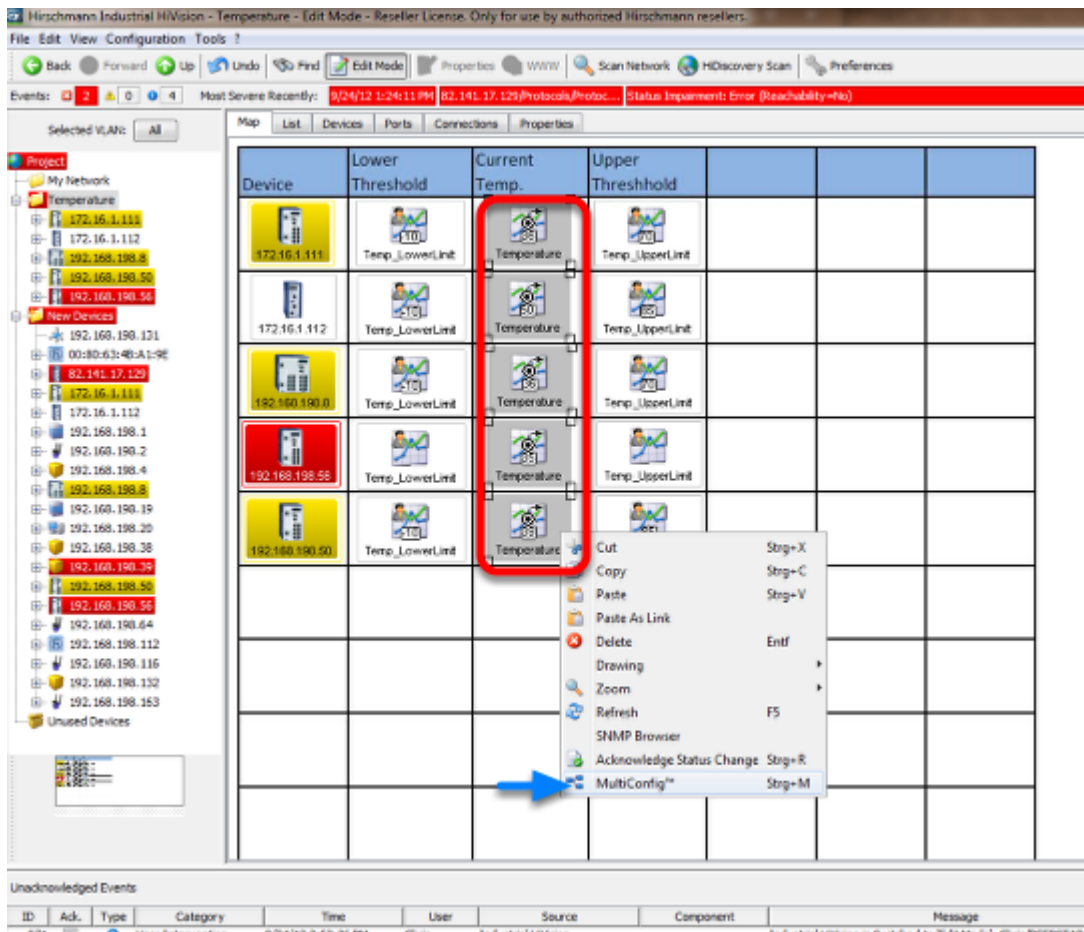


Create a temperature overview map and arrange the icons accordingly.

The picture shows an example with a background image.

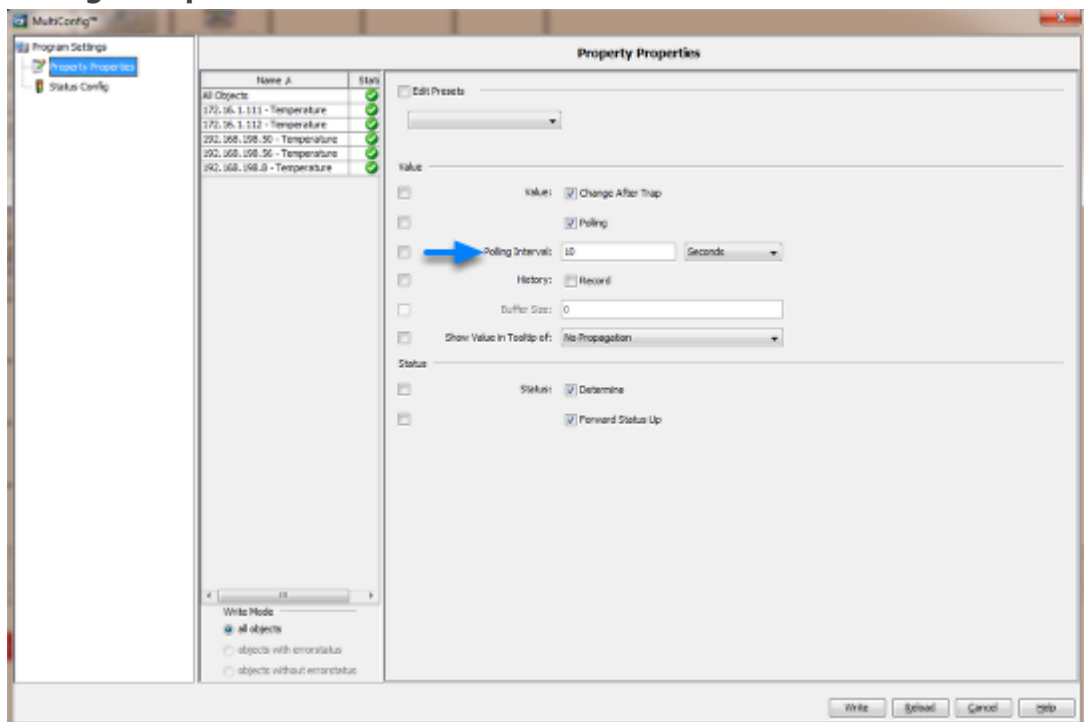
All icons are copies of objects in other maps.

Open Multiconfig



In the new created overview map select the current temperature icons.
 Right click to open the context menu and select **MultiConfig**.

Change Properties



Change the polling interval to 10s

