

Configuration File Compare

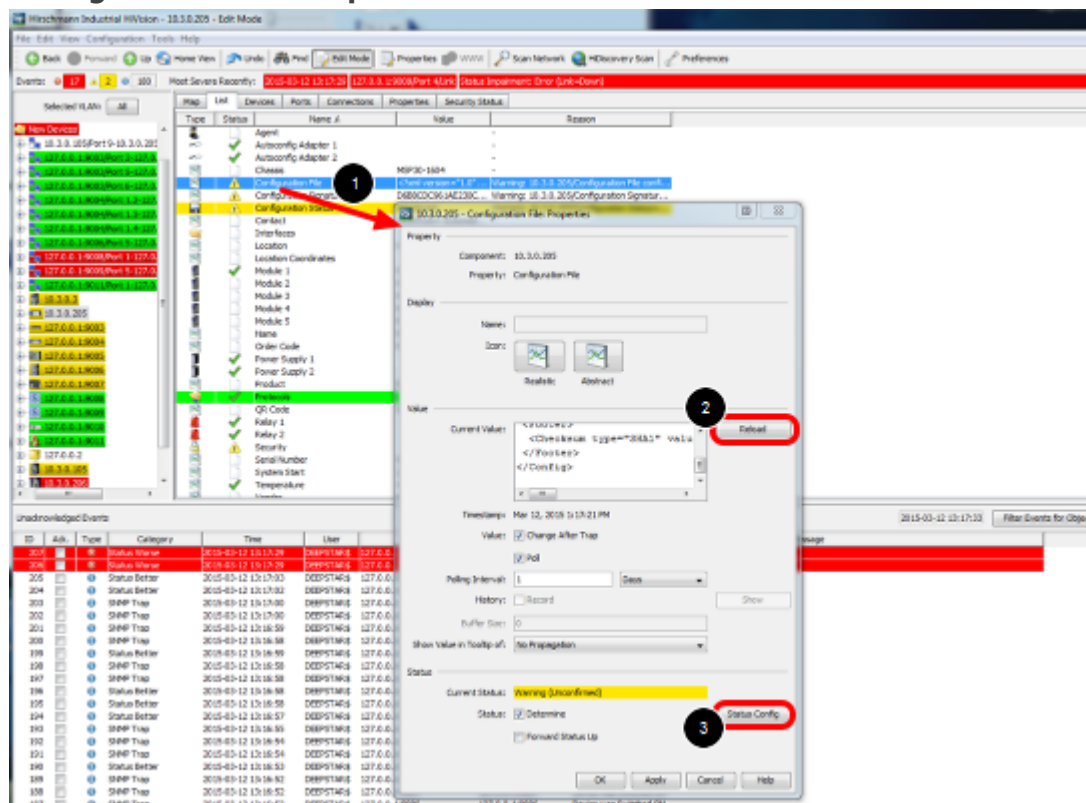
- 2018-02-21 - Industrial HiVision

As of v6.0 IHV is able to monitor the configuration file of a device (Platform4, Platform5, EAGLE, BAT and GarrettCom).

Therefore the clear text configuration (script or xml) is stored in a property. The standard polling/status configuration can be used for comparing the current configuration to the reference config.

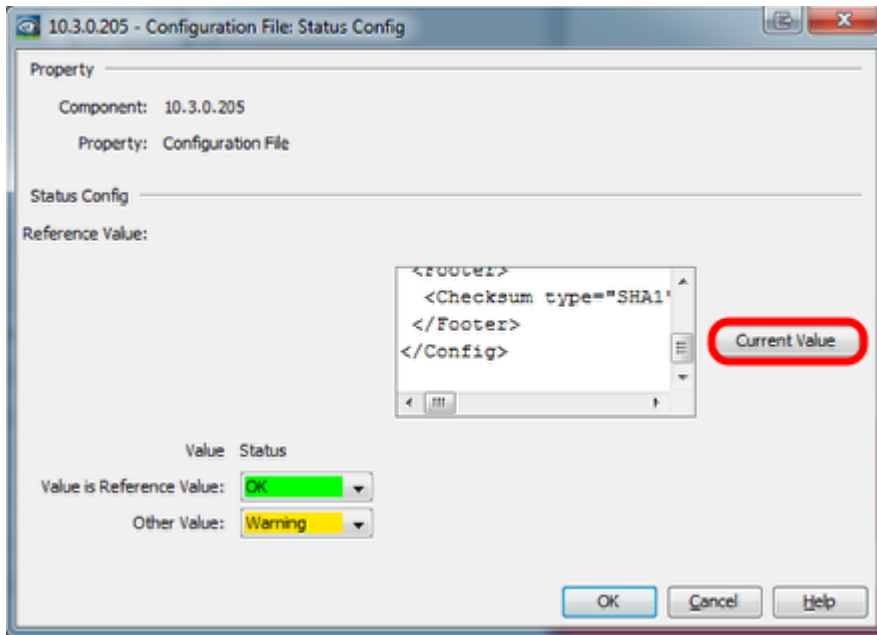
This lesson describes how to set a reference configuration and in case of configuration changes how you can display the differences.

Configuration File Properties



1. double click on the property Configuration File
2. press reload to download the current configuration from the device
3. open the status configuration

Configuration File - Status Config



In the status configuration dialog you can set the current value as reference value.

Change the configuration

Hirschmann Industrial HiView - 10.3.0.205 - Edit Mode

File Edit View Configuration Tools Help

Back Forward Up Home View Links Print Edit Mode Properties View Scan Network HiDiscovery Scan Preferences

Events: 0 2 1 187 Most Severe Recently: 2015-03-12 13:18:08 127.0.0.1:9000/Port 40/In Load Status: Impedance Error (In Load) => 20.0, Current Value: 190.0

Type	Status	Name #	Value	Reason
Agent				
Autoconfig Adapter 1				
Autoconfig Adapter 2				
Chassis			HSP30-1804	
Configuration File			SHA1 Version: 1.0	
Configuration Signature			D68BCDC941NE230C...	Warning: 10.3.0.205/Configuration Signatur...
Configuration Status			Not Saved	Warning: 10.3.0.205/Configuration Status...
Contact			Hirschmann Automate...	
Interfaces				
Location Coordinates			Hirschmann	
Module 1			HSP40-071101502...	
Module 2			HSP40-071101502...	
Module 3			HSP40-071101502...	
Module 4			HSP40-071101502...	
Module 5			HSP40-071101502...	
Name			HSP-e65559P093C	
Order Code			HSP30-1804HSC294...	
Power Supply 1				
Power Supply 2				
Product			HSP	
Release				
QR Code			942075999 HSP30-...	
Role 1				
Role 2				
Security				
Serial Number			94207599901001590	
System Start			2015-02-27 11:47:55	
Temperature			43	
Updater			Hirschmann	

Unacknowledged Events

ID	Subj.	Type	Category	Time	User	Source	...
223	Status Better			2015-03-12 13:27:01	DEPSTARIS	10.3.0.205	Configu...
222	User Intervention			2015-03-12 13:27:01	Chris	10.3.0.205	
221	Status Better			2015-03-12 13:28:26	DEPSTARIS	127.0.0.1:9000	Port 40...
220	Status Worse			2015-03-12 13:28:29	DEPSTARIS	127.0.0.1:9000	Port 40...
219	Application Info			2015-03-12 13:28:30	ib	Industrial HiView Service	Port 41...
218	Application Info			2015-03-12 13:28:40	ib	Industrial HiView Service	Port 41...
217	Application Info			2015-03-12 13:28:47	ib	Industrial HiView Service	Port 41...
216	Status Worse			2015-03-12 13:28:43	DEPSTARIS	127.0.0.1:9000	Port 51...
215	Status Better			2015-03-12 13:28:43	DEPSTARIS	127.0.0.1:9000	Port 51...
214	Status Better			2015-03-12 13:28:43	DEPSTARIS	127.0.0.1:9000	Port 51...
213	Status Worse			2015-03-12 13:28:40	DEPSTARIS	127.0.0.1:9000	Port 51...
212	Status Worse			2015-03-12 13:28:40	DEPSTARIS	127.0.0.1:9000	Port 41...
211	Status Better			2015-03-12 13:28:40	DEPSTARIS	127.0.0.1:9000	Port 41...
210	Status Worse			2015-03-12 13:28:40	DEPSTARIS	127.0.0.1:9000	Port 11...
209	Status Better			2015-03-12 13:28:40	DEPSTARIS	127.0.0.1:9000	Port 11...
208	Status Worse			2015-03-12 13:28:35	DEPSTARIS	127.0.0.1:9000	Port M1...
207	Status Worse			2015-03-12 13:28:29	DEPSTARIS	127.0.0.1:9000	Port 41...
206	Status Worse			2015-03-12 13:28:29	DEPSTARIS	127.0.0.1:9000	Port 31...
205	Status Better			2015-03-12 13:28:03	DEPSTARIS	127.0.0.1:9000	Preload...
204	Status Better			2015-03-12 13:28:02	DEPSTARIS	127.0.0.1:9000	Preload...
203	SNMP Trap			2015-03-12 13:28:00	DEPSTARIS	127.0.0.2	127.0.0...
202	SNMP Trap			2015-03-12 13:28:00	DEPSTARIS	127.0.0.1:9000	127.0.0...

10.3.0.205 - Location Properties

Property
Component: 10.3.0.205
Property: Location

Deploy
Name:
Icon: Realistic Abstract

Value
Current Value: Hirschmann PECE
Timestamp: Mar 12, 2015 12:27:43 PM
Value: Change After Trap
 Fill
Polling Interval: 1 Minutes
History: Record Show
Buffer Size: 100
Show Value in Tooltip of: Device

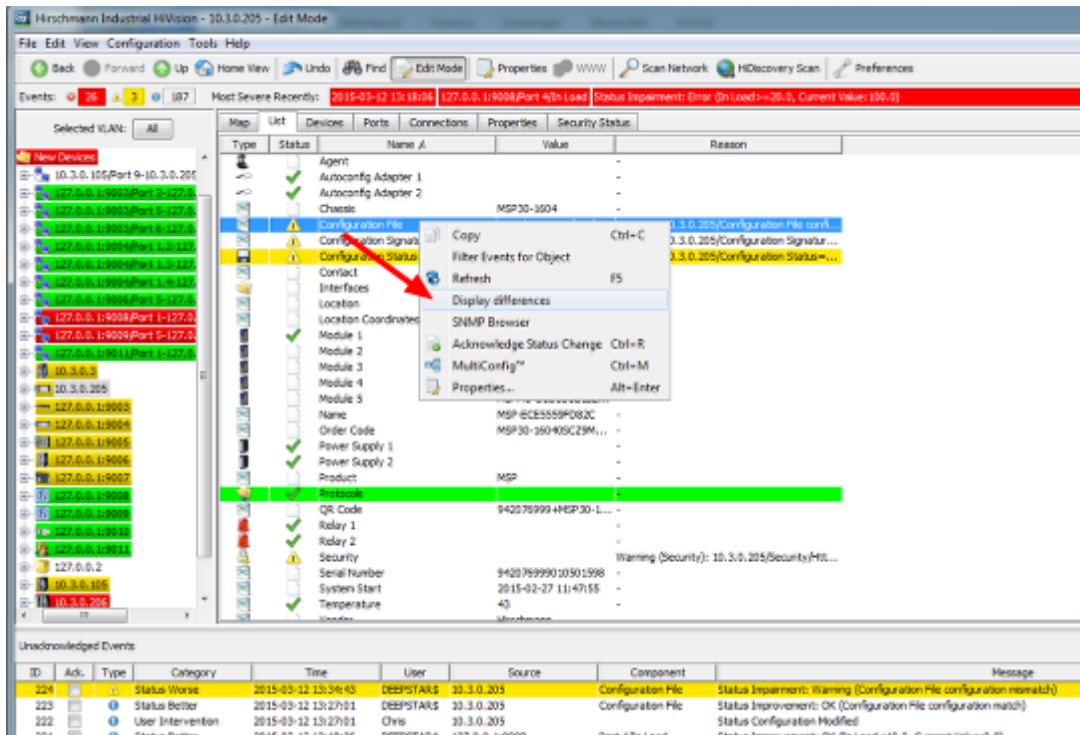
Status
Current Status: No Status
Status: Determine Status Config
 Forward Status Up

OK Apply Cancel Help

Change the device configuration e.g. the device location:

1. double click the property location
2. change the current value
3. press write

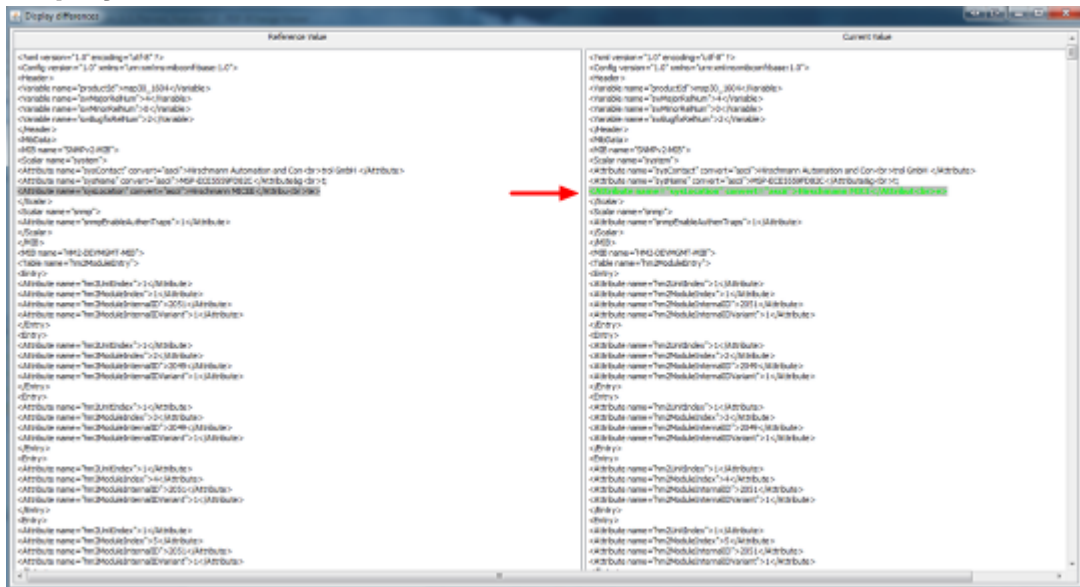
4. close the dialog with ok



Reload the Configuration File property if the change is not already detected.

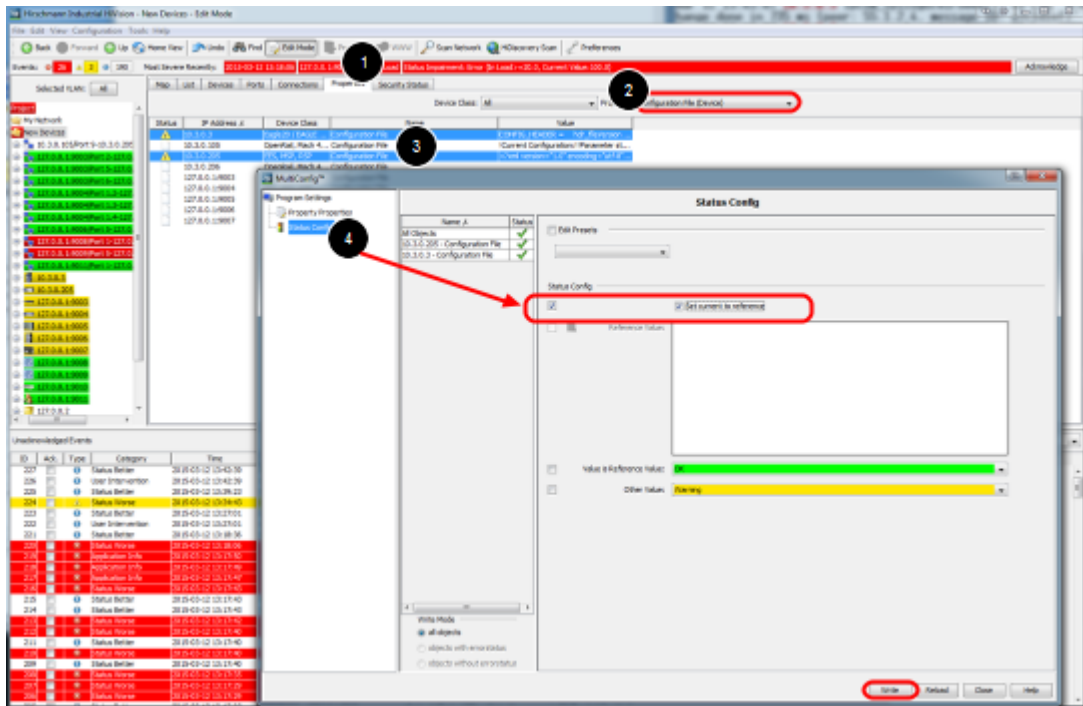
Open the context menu (right click on Configuration File) and select Display Differences

Display Differences



A new window will open which highlights the differences between the current and the reference config.

Set reference value per MultiConfig



1. To set the current value as reference value on multiple devices navigate to the Properties tab.
2. Select the property 'Configuration File (Device)'
3. Highlight devices and select Multiconfig from the context menu (right click)
4. Go to Status Config and tick 'Set current to reference'