

Configuration Signature Check

- 2018-02-21 - Industrial HiVision

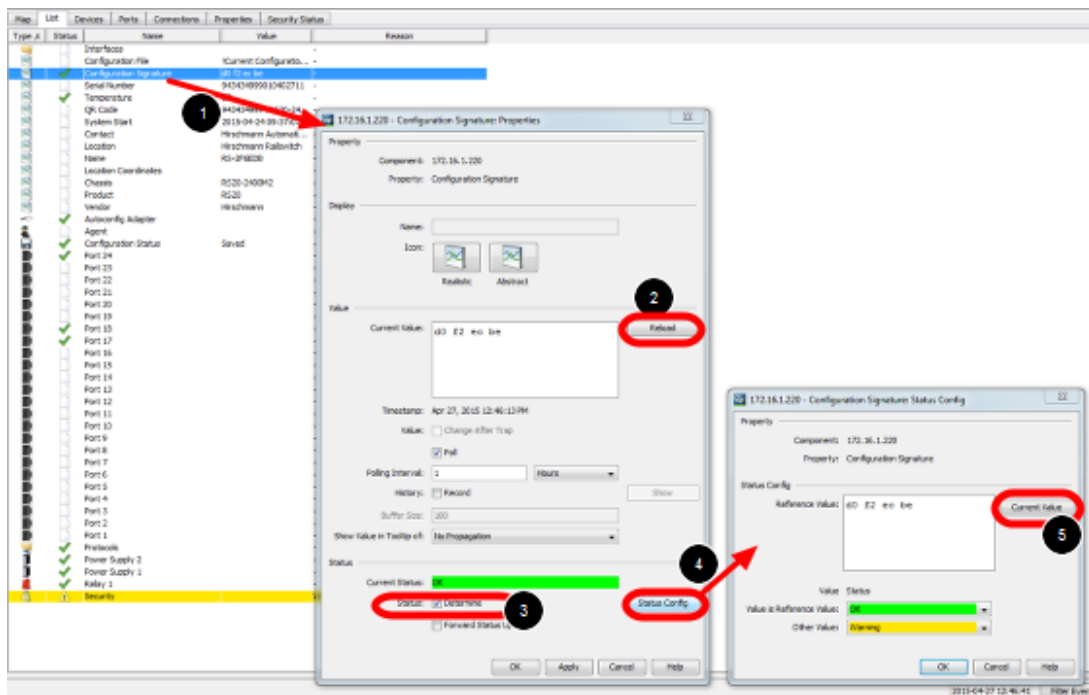
As of v6.0 IHV is able to monitor the configuration signature of a device (Platform4, Platform5, EAGLE)

Therefor the signature is stored in a property.

The standard polling/status configuration can be used for comparing the configuration signature to the reference signature.

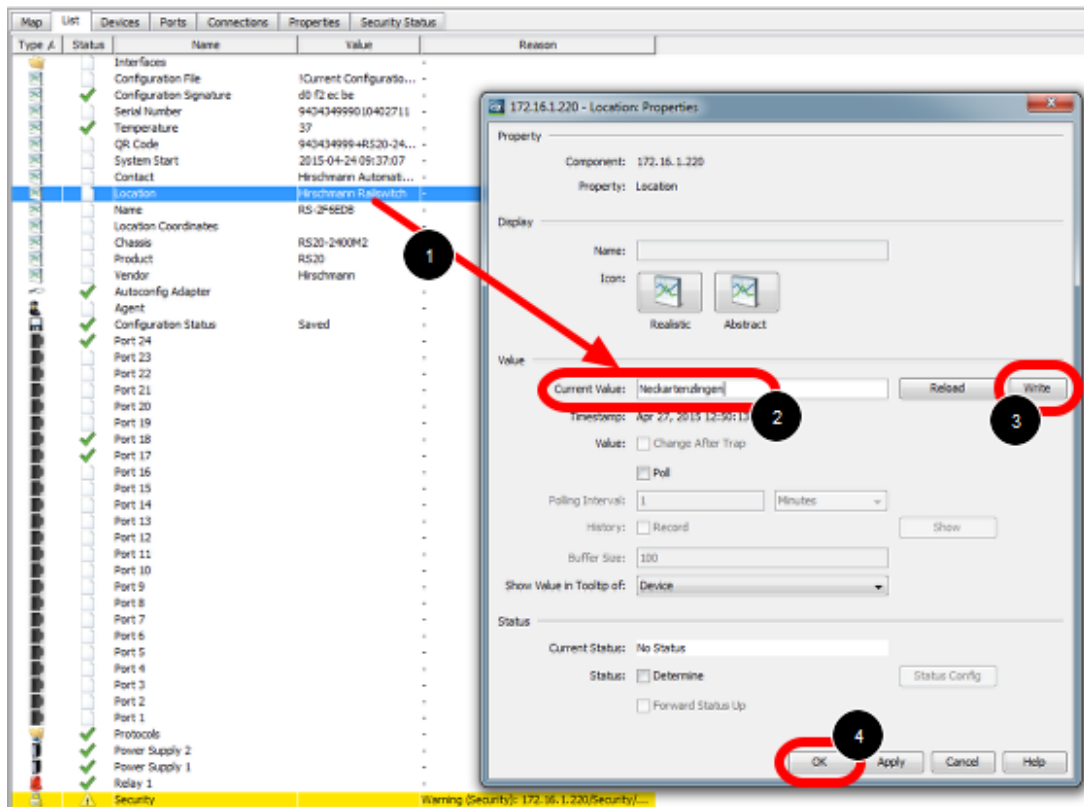
This lesson describes how to set a reference value of the configuration signature and how differences are displayed.

Configuration Signature Properties



1. double click on the property **Configuration Signature**
2. press reload to download the current configuration signature from the device
3. tick check box **Determine Status**
4. open the status configuration
5. set the current value as reference value

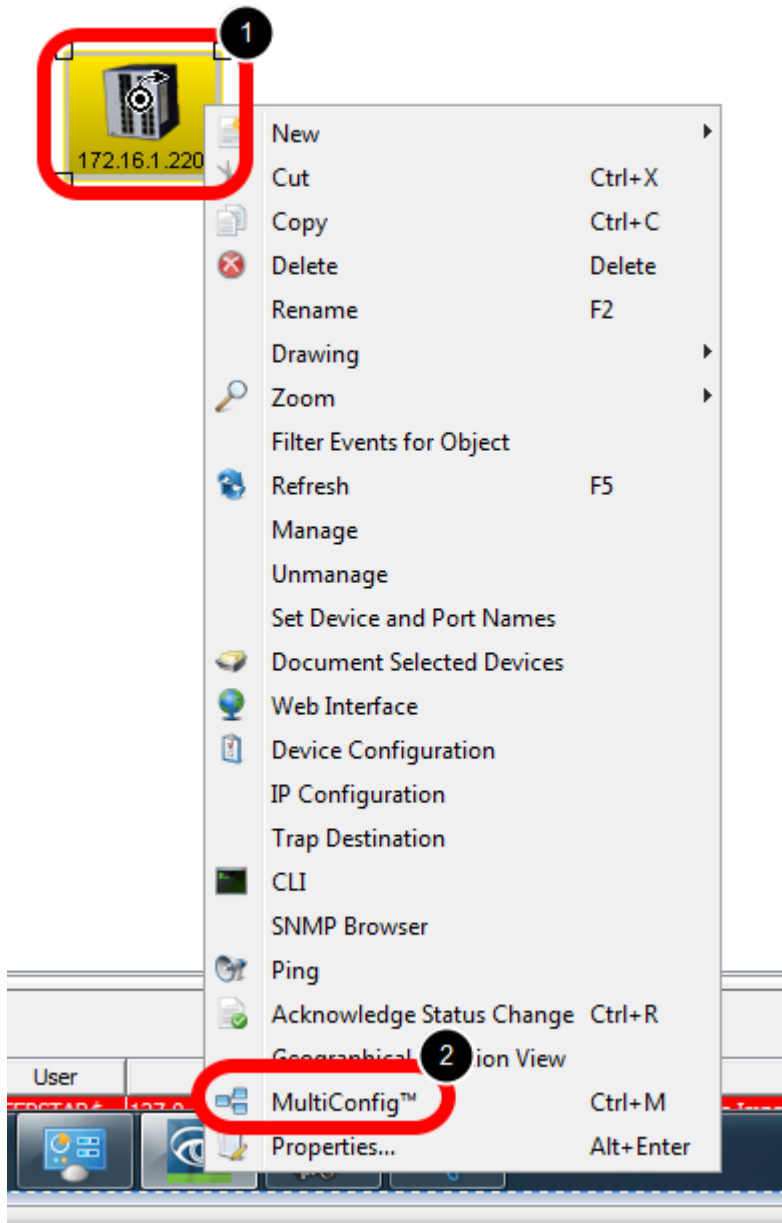
Change the configuration



Change the device configuration e.g. the device location:

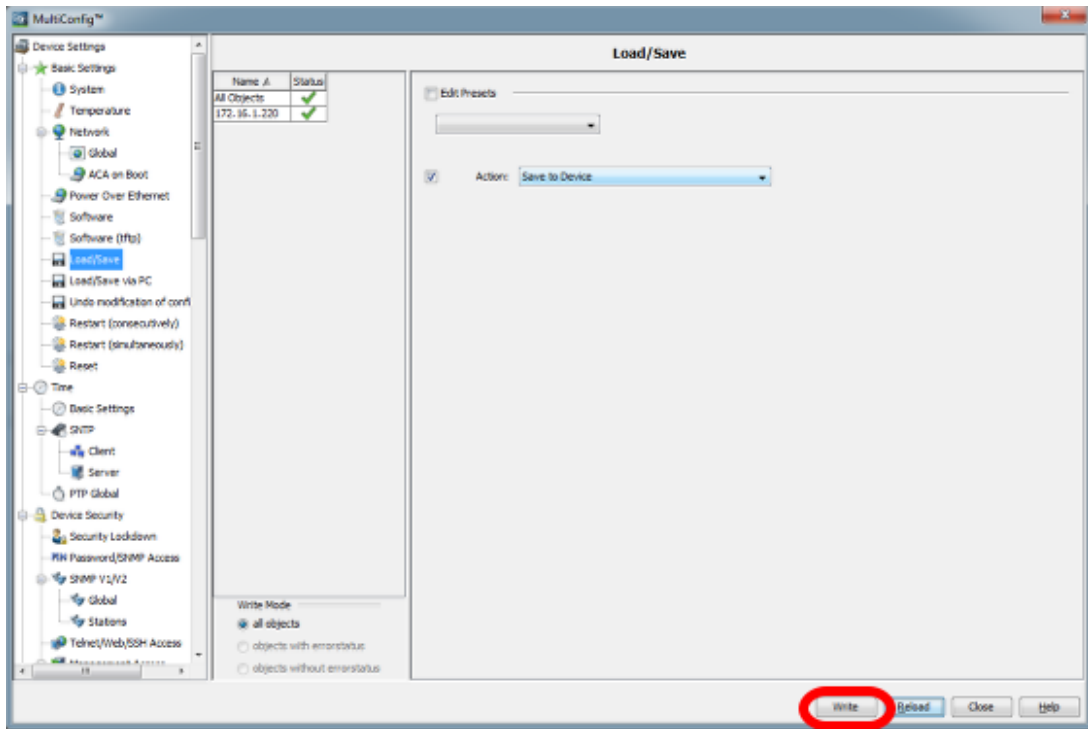
1. double click the property location
2. change the current value
3. press write
4. close the dialog with ok

MultiConfig



1. right click the device on which you just changed the location property
2. select MultiConfig from the context menu

Save the configuration



Save the configuration by pressing Write in the Load/Save dialog

Configuration Signature - Status Impairment

The screenshot displays the Winbox Industrial Manager interface. The main window shows a network map with several devices. Two dialog boxes are open:

- 172.16.1.220 - Configuration Signature Properties:** This dialog shows the 'Current Value' field with the value '03 00 00 00'. A red circle highlights this field.
- 172.16.1.220 - Configuration Signature Status Config:** This dialog shows the 'Reference Value' field with the value '03 00 00 00'. A red circle highlights this field.

A red arrow points from the 'Current Value' field in the first dialog to the 'Reference Value' field in the second dialog. The background network map shows various devices like 'Checkin', 'Dial Number', 'System Mail', 'Power Supply 1', and 'Power Supply 2'. At the bottom, there is a table of unacknowledged events:

ID	ACK	Type	Category	Time	User	Source	Component	Message
168		Event	Status Error	2015-04-27 12:09:36		172.16.1.220	Configuration Signature	Status Implementation: Warning Configuration Signature (03 00 00 00)
167		Event	Status Error	2015-04-27 12:09:36		172.16.1.220	Configuration Signature	Status Implementation: Warning Configuration Signature (03 00 00 00)
166		Event	Status Error	2015-04-27 12:09:36		172.16.1.220	Configuration Signature	Status Implementation: Warning Configuration Signature (03 00 00 00)
165		Event	Status Error	2015-04-27 12:09:36		172.16.1.220	Configuration Signature	Status Implementation: Warning Configuration Signature (03 00 00 00)