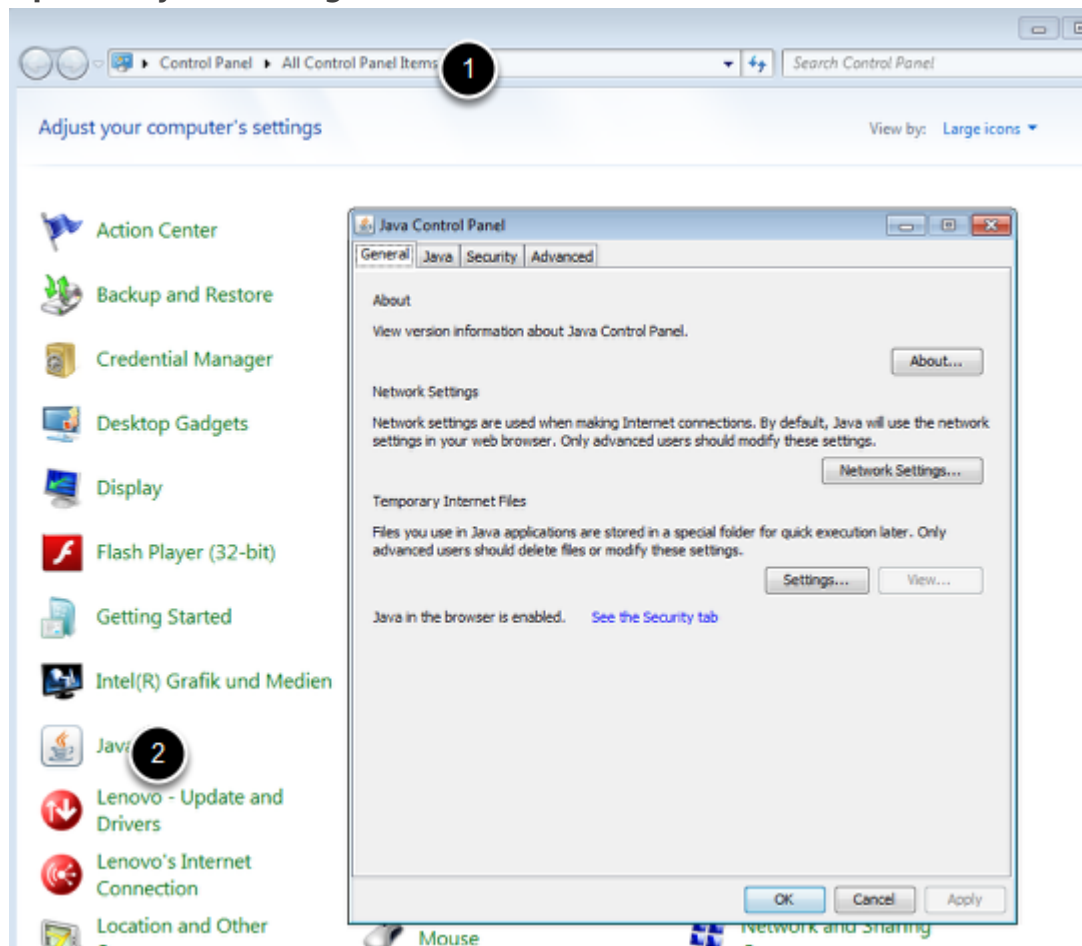


What are the Java recommended settings for remote access on Hivision Server ?

- 2018-02-21 - Industrial HiVision

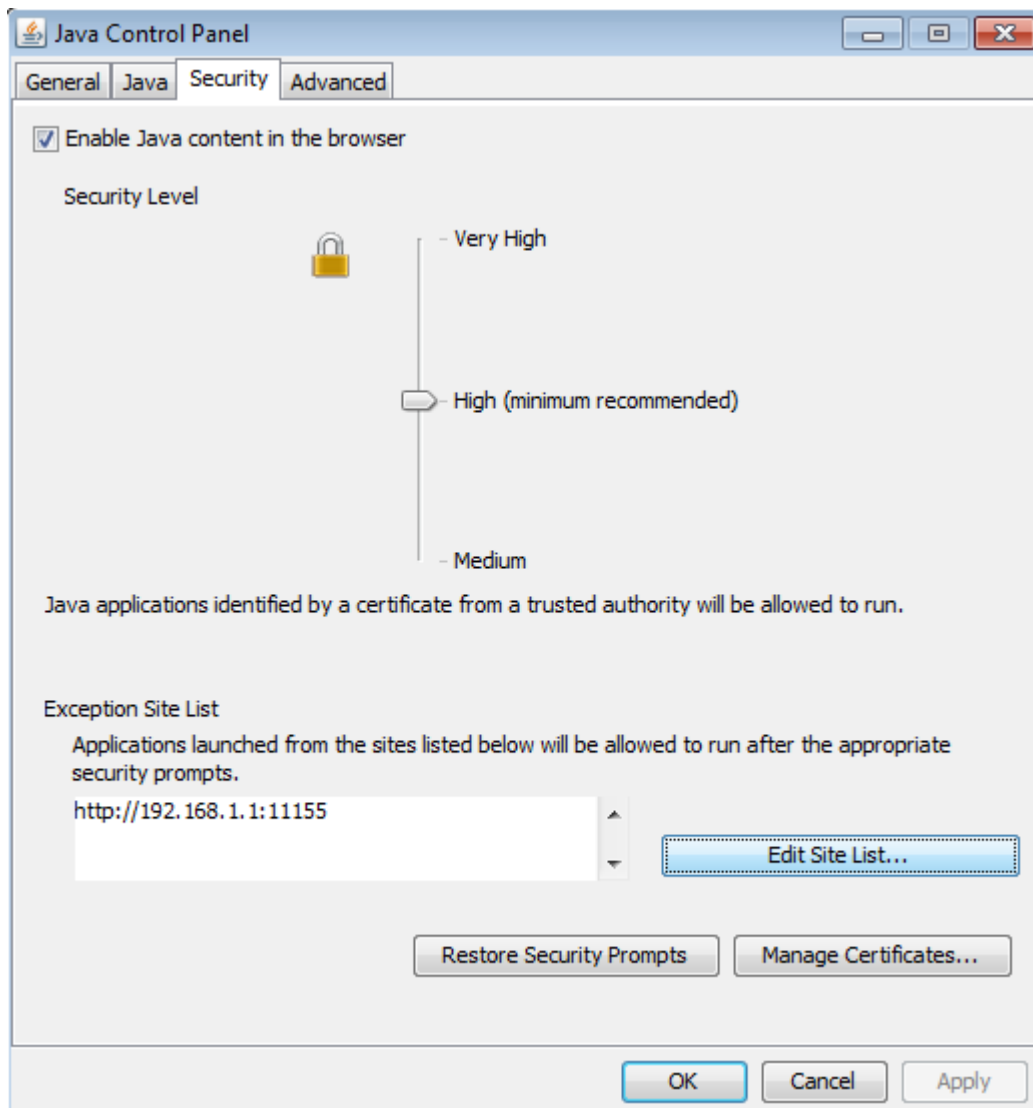
This document describes the Java recommended settings to avoid problems that may occur with the different java versions.

Open the java settings



The Java settings are accessible from the Control Panel

Security settings



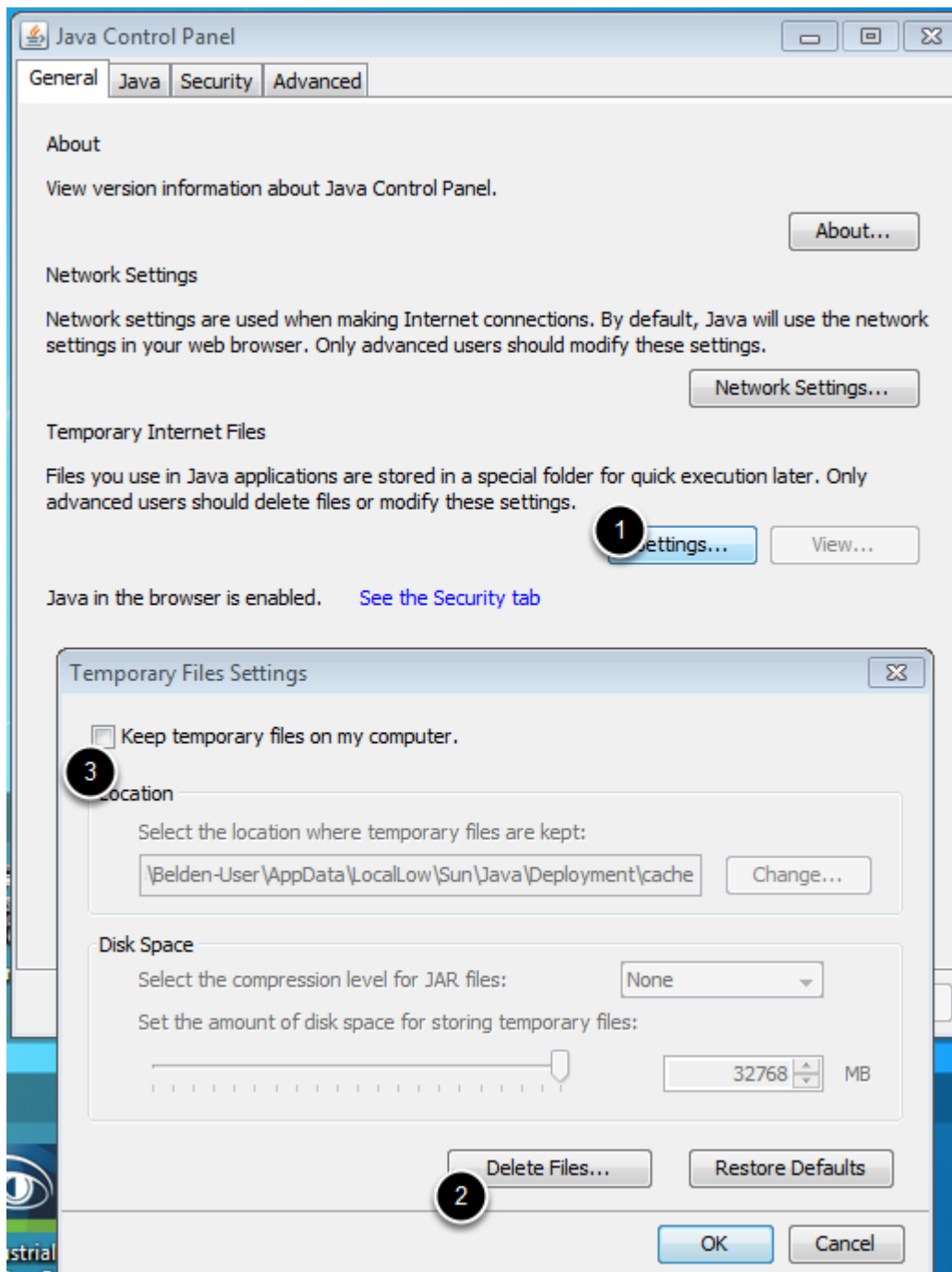
Add the URL of the server in the Exception site list.

Example in the screen shot :

server address : 192.168.1.1

Port : 11155 (default port for Hivision 5.1)

General settings



From the "General " tab, select "Settings"

Delete Files ...

Unselect "Keep temporary files on my computer"