

## Configuration Signature Check

- 2018-02-21 - Industrial HiVision

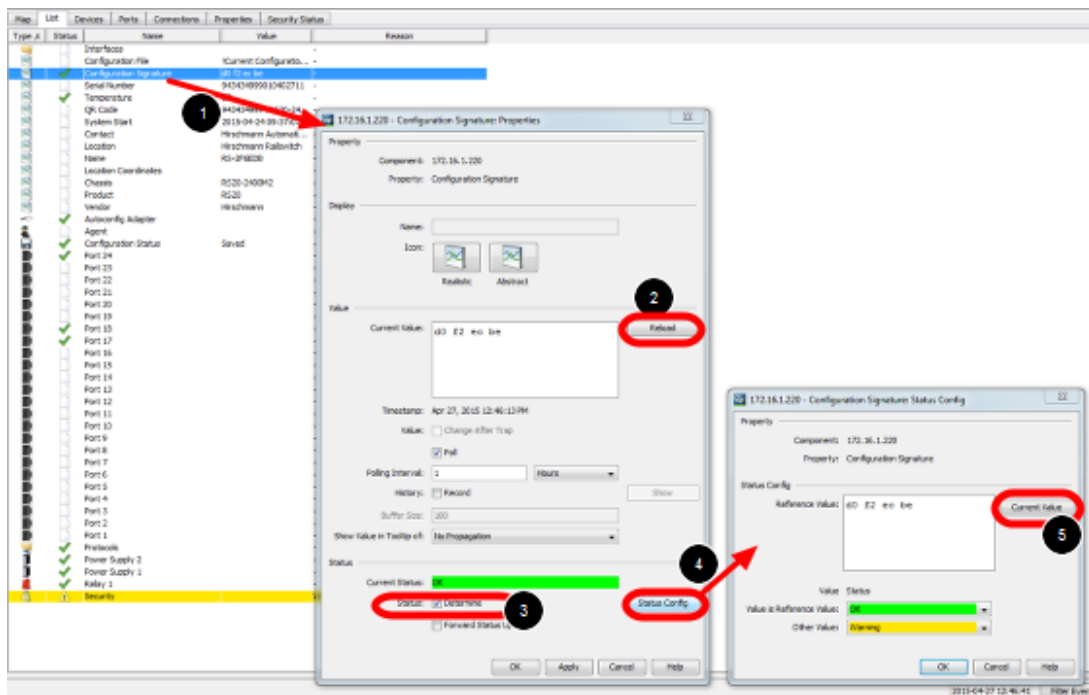
As of v6.0 IHV is able to monitor the configuration signature of a device (Platform4, Platform5, EAGLE)

Therefor the signature is stored in a property.

The standard polling/status configuration can be used for comparing the configuration signature to the reference signature.

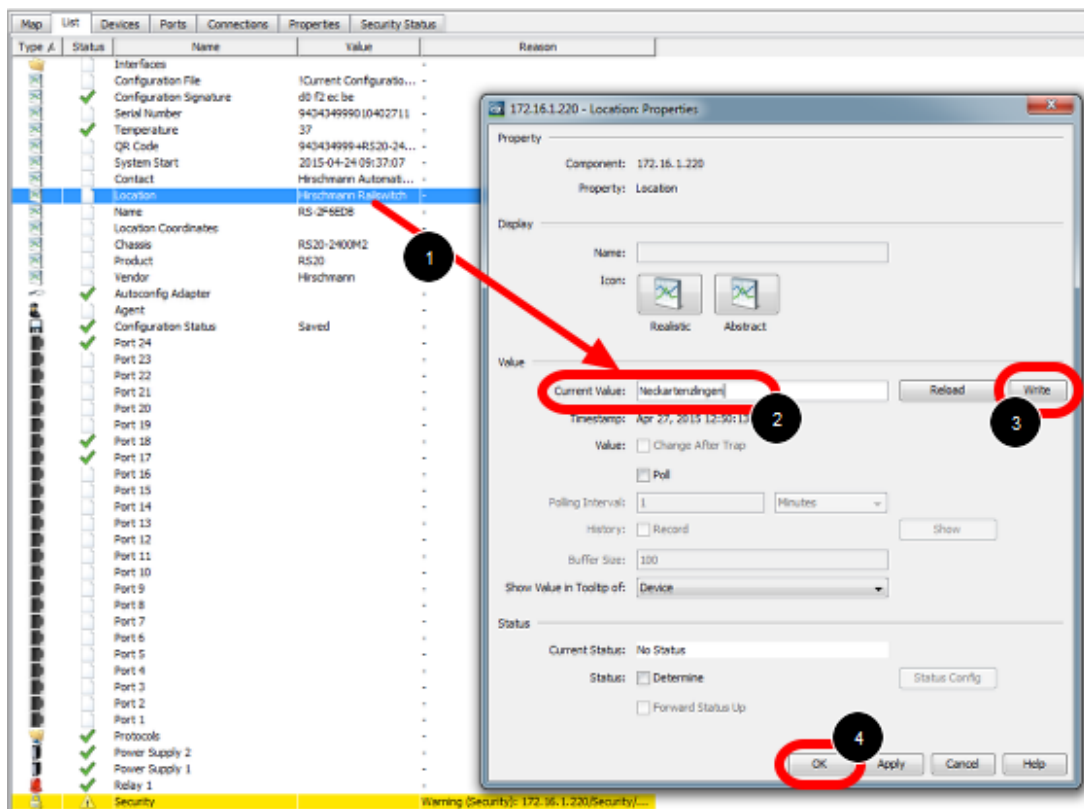
This lesson describes how to set a reference value of the configuration signature and how differences are displayed.

### **Configuration Signature Properties**



1. double click on the property **Configuration Signature**
2. press reload to download the current configuration signature from the device
3. tick check box **Determine Status**
4. open the status configuration
5. set the current value as reference value

## Change the configuration



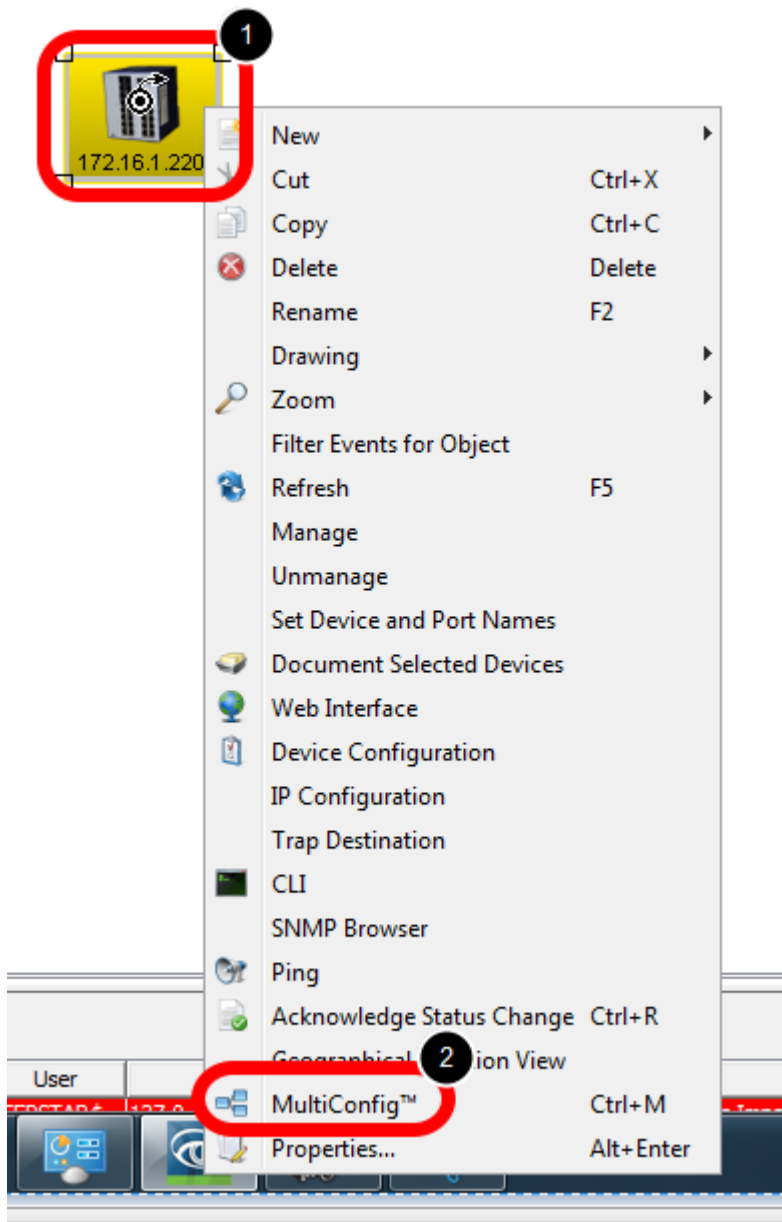
Change the device configuration e.g. the device location:

1. double click the property location
2. change the current value
3. press write
4. close the dialog with ok

## MultiConfig

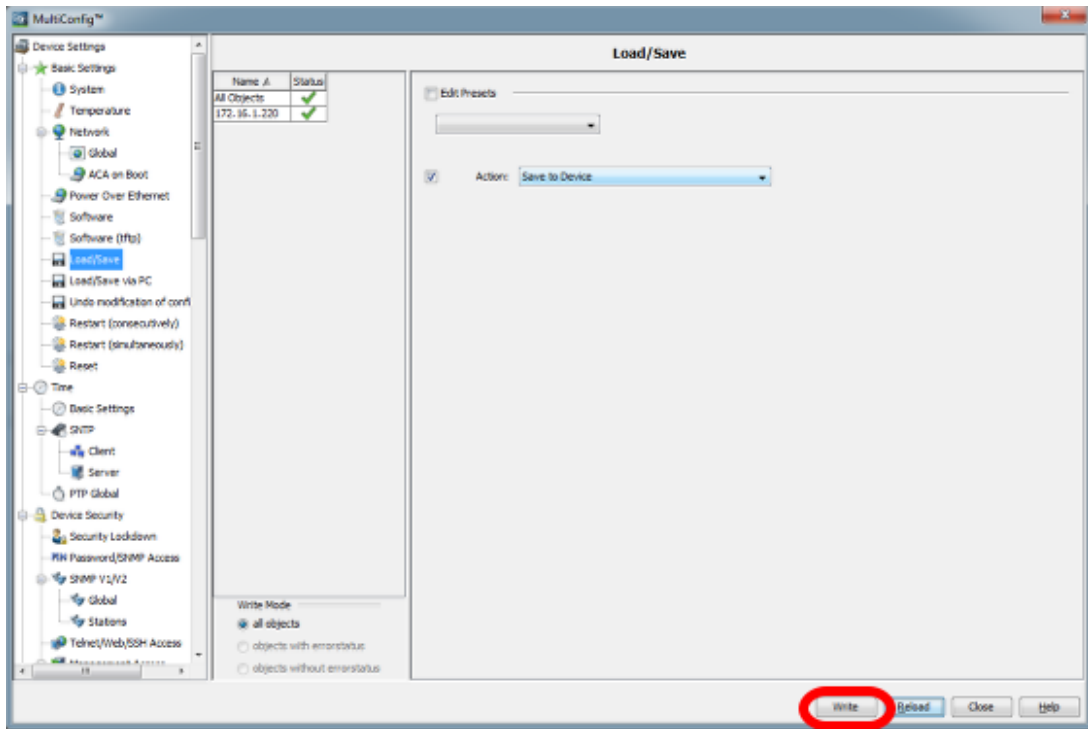






1. right click the device on which you just changed the location property
2. select MultiConfig from the context menu

### Save the configuration



Save the configuration by pressing Write in the Load/Save dialog

### Configuration Signature - Status Impairment

Winbox Industrial Edition - 172.16.1.229 - 128 Nodes

File Edit View Configuration Tools Help

Back Forward Home New [F5] Undo [Ctrl+Z] Redo [Ctrl+Y] Properties [F4] Scan Network [F5] Backdoor Scan [F6] Preferences

Device: 172.16.1.229 [172.16.1.229] [172.16.1.229] [Device Information: 172.16.1.229]

Selected Paths: All

File Manager: 172.16.1.229 - Configuration Signature Properties

Property: Component: 172.16.1.229  
Property: Configuration Signature

Value: **03 02 00 04**

Current Value: **03 02 00 04**

Timestamp: Apr 27, 2011 12:58:59 PM

History: [Refresh] [Clear]

Status: Current Status: **Warning (Exceeded)**

172.16.1.229 - Configuration Signature Status Config

Property: Component: 172.16.1.229  
Property: Configuration Signature

Value: **03 02 00 04**

Value in Reference Value: **03 02 00 04**

Other Value: **Warning**

Unacknowledged Events

ID	Icon	Type	Category	Time	User	Source	Component	Message
100		Status Error	172.16.1.229	2011-04-27 12:58:59 PM	172.16.1.229	Configuration Signature	Status Exceeded: Warning Configuration Signature 03 02 00 04	
101		Status Error	172.16.1.229	2011-04-27 12:58:59 PM	172.16.1.229	Configuration Signature	Status Exceeded: Warning Configuration Signature 03 02 00 04	
102		Status Error	172.16.1.229	2011-04-27 12:58:59 PM	172.16.1.229	Configuration Signature	Status Exceeded: Warning Configuration Signature 03 02 00 04	