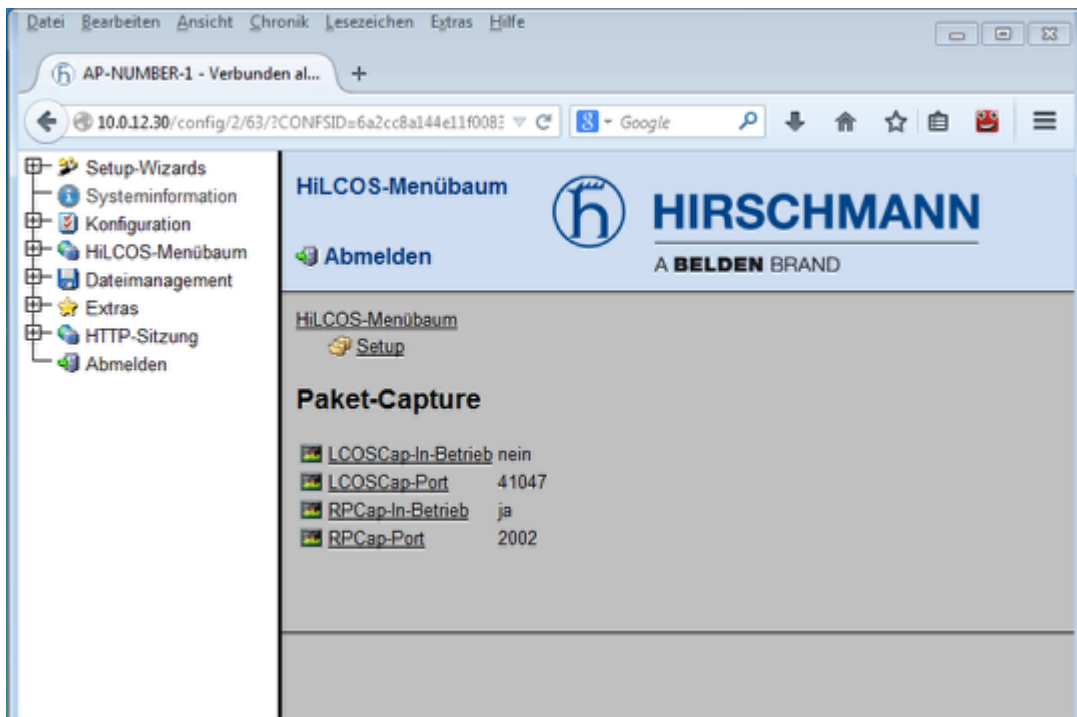


How to remotely capture the traffic of an Open BAT interface with RPCap function and Wireshark

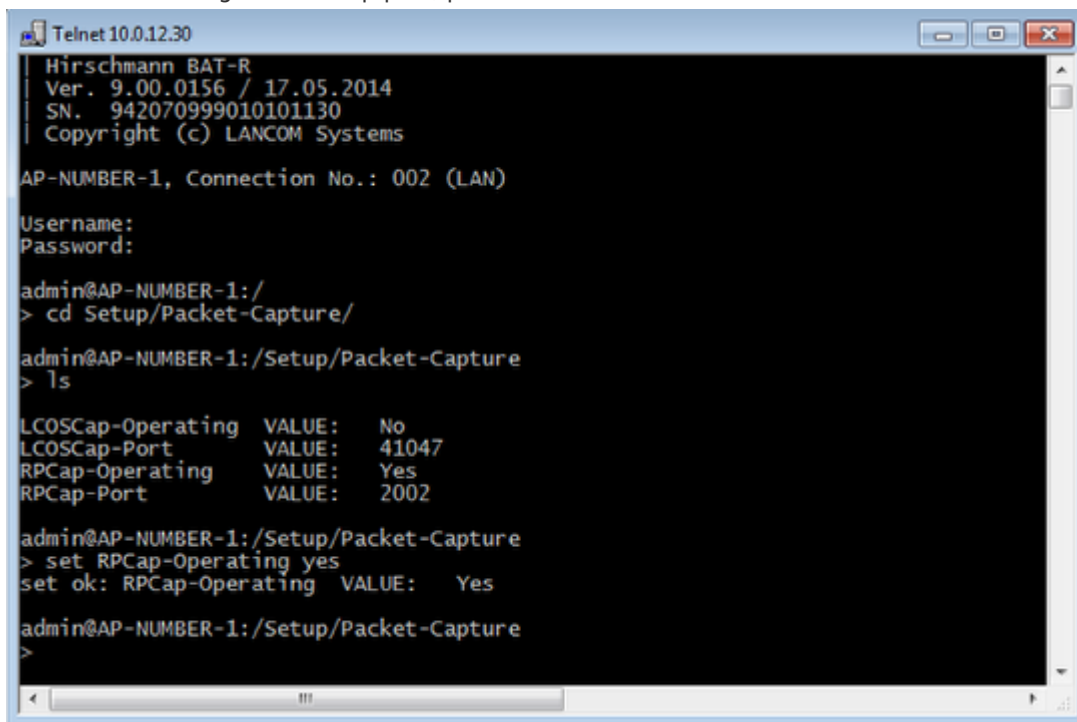
- 2018-02-21 - BAT, WLC (HiLCOS)

This lesson explains via a few steps how to use the RPCap function to capture traffic remotely on specific interface(s) of the BAT devices (rel 8.90)

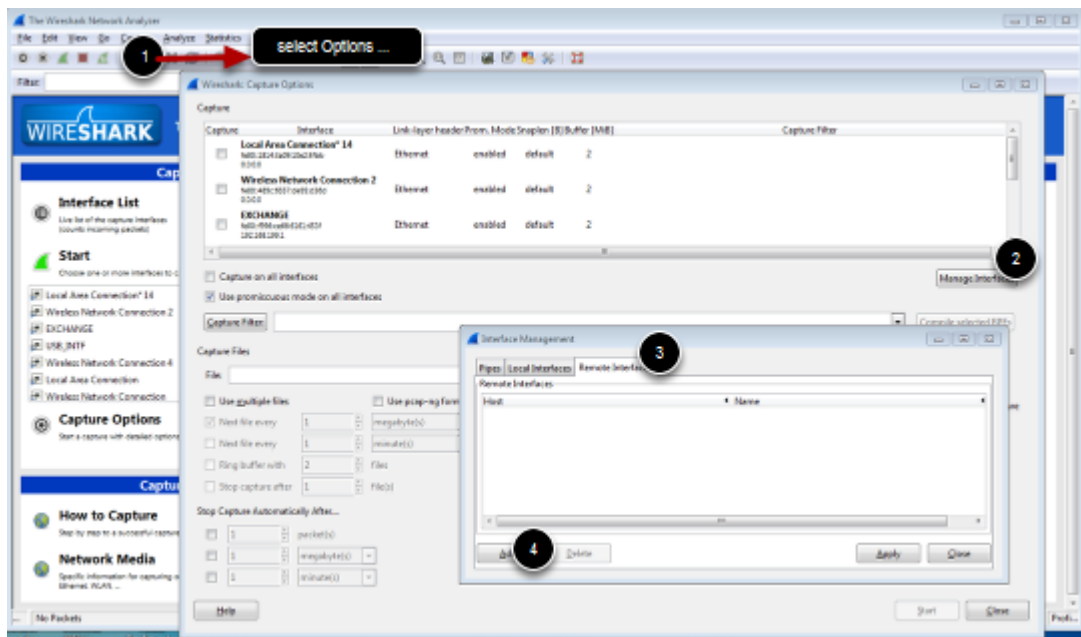
Enable RPCap on the BAT using the web interface or per CLI



You can also change the RPCap port, per default it's 2002



Add remote interfaces in wireshark options



From Wireshark main Windows, open the Capture Options window (Capture/Options...). Click on manage Interface and select the tab Remote Interfaces and click on Add

Configure the BAT as remote device



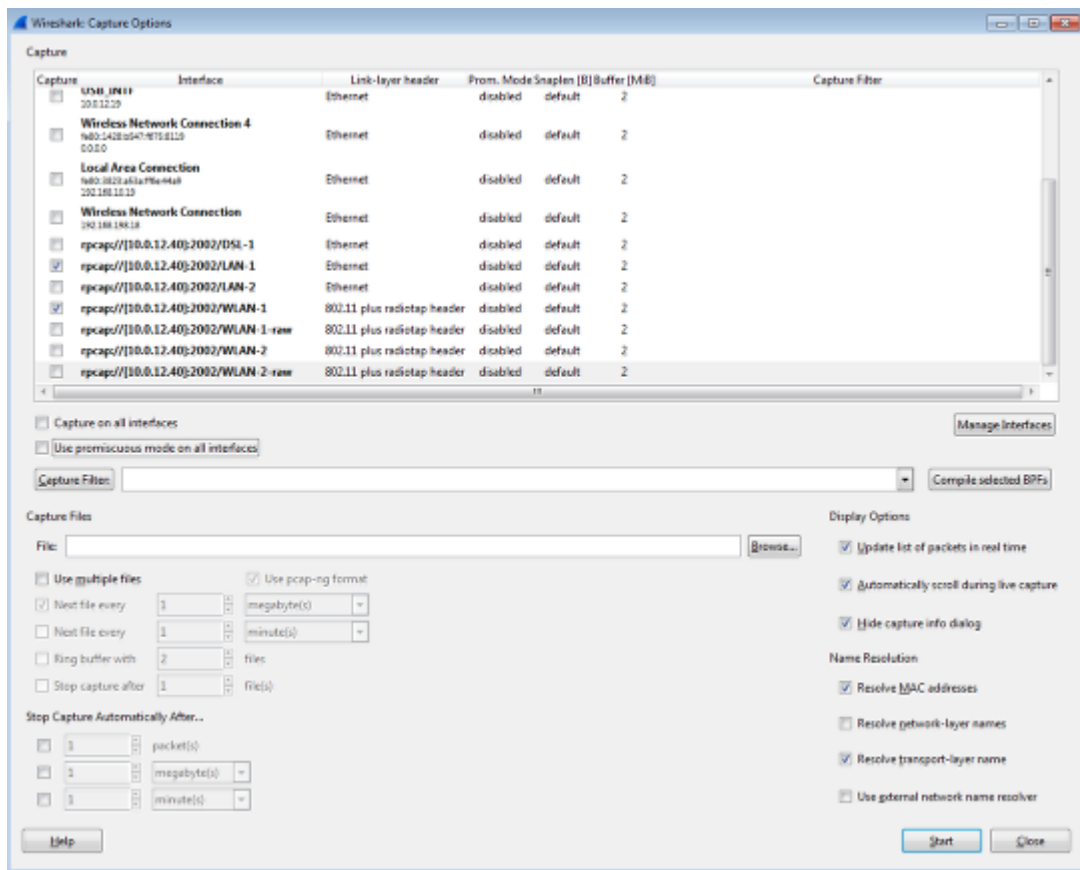
Give the IP address of the BAT, the RCap port relevant username and password to access the device then click ok

RCap gives all the available interfaces on the remote device



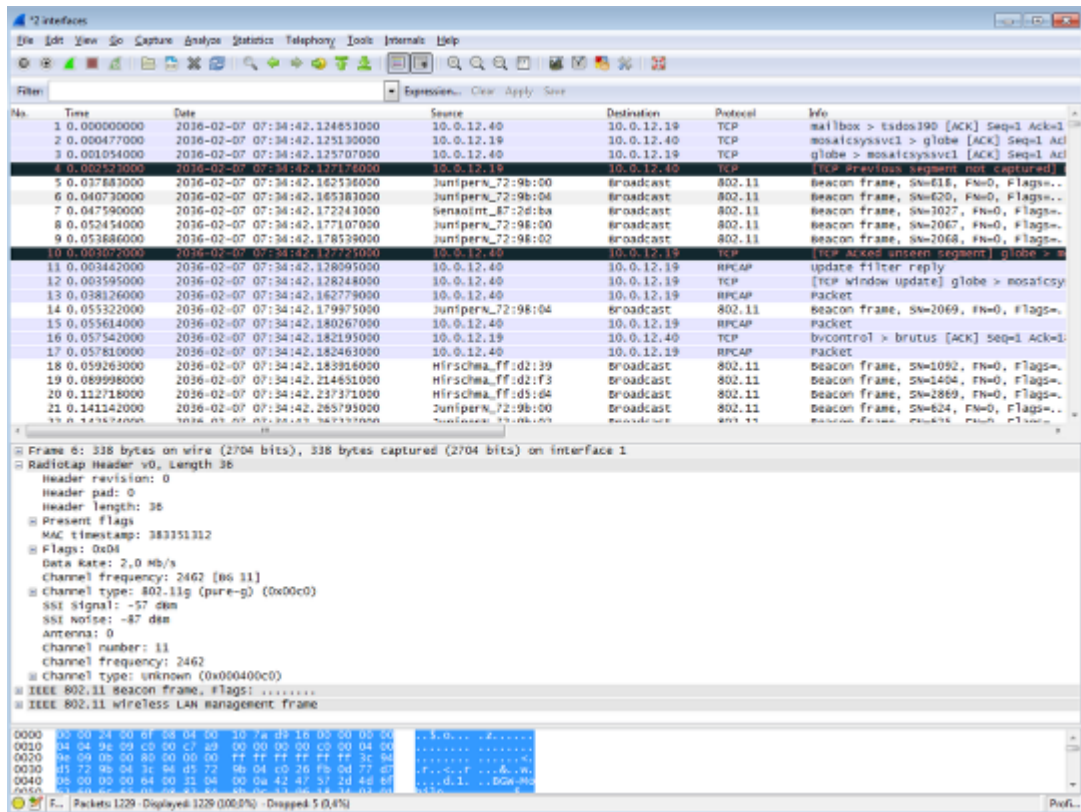
click on Apply and Close

From the Capture option Window, the remote interfaces are now available, select the one(s) you want to capture the traffic on.



In this example traffic going through LAN-1 and WLAN-1 will be captured. Then just clic on start

Result view



RPCap tunnels the traffic between the BAT and the capturing station. Packets from WLAN-1 with radio header and packets from LAN-1 are in the same capture but can be read separately filtering the interface id.